

Cincinnati Ohio 3D Miniature



jarvizar

[VIEW IN BROWSER](#)

updated 4. 3. 2024 | published 4. 3. 2024

Summary

3D Miniature of Cincinnati OH created with OSM data

[World & Scans](#) > [Architecture & Urbanism](#)

Tags: [3d](#) [mini](#) [landscape](#) [terrain](#) [topography](#) [miniature](#)
[model](#) [city](#) [usa](#) [cincinnati](#) [ohio](#) [geography](#) [topo](#)
[cityscape](#) [oh](#) [cincy](#)

3d miniature of Cincinnati, Ohio!

Model created in Blender using the [Blosm](#) addon.

Check out my collection of other miniature cities: https://www.printables.com/@jarvizar_1334825/collections/1124416

Slicing & Printing Details

This model was designed to be printed with a 0.4mm nozzle and 0.16mm layer heights.

Try using a 0.2mm nozzle (0.08mm layer heights) or scaling up for even finer detail!

Note: If roads or smaller details disappear after slicing, try lowering the extrusion/line width of external perimeters (outer walls) closer to 0.4mm OR **use Arachne walls**. Can also try enabling “Detect Thin Walls”.

Feel free to reach out if you run into any other issues!

Framing Details

This model measures almost exactly **6.7in by 4.7in** (170.5mm X 119.5mm) and should fit most 5x7 frames (assuming frame lip/overlap is around a quarter inch). Feel free to change the scale/size of the model(s) to meet your needs.

Personally I use these cheap frames from Amazon: <https://www.amazon.com/dp/B0C8HY7YSQ>

And blue printer paper: <https://www.amazon.com/dp/B00006IDQT>

I also included a **fully printable frame** (including a 1mm thick water plate) designed to fit all my miniatures.



A frame is not required! This model looks great by itself and can be displayed almost anywhere.

See my [Patreon](#) for a commercial license, early downloads, polls towards future models, and more!

[Buy me a coffee :\)](#)

Model files



cincinnati.stl

☐ 0.16mm layer height



frame-v2.stl

☐ optional



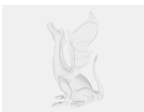
water-v2.stl

☐ optional



cincinnati-label.stl

☐ optional; 1 color change for the text



cincinnati.3mf

☐ bambu studio 3mf

License

This work is licensed under a
[Creative Commons \(4.0 International License\)](#)



Attribution-NonCommercial

- ✗ | Sharing without ATTRIBUTION
- ✓ | Remix Culture allowed
- ✗ | Commercial Use
- ✗ | Free Cultural Works
- ✗ | Meets Open Definition