



The PinchBox

 Fredslund

[VIEW IN BROWSER](#)

updated 25. 2. 2024 | published 25. 2. 2024

Summary

The PinchBox Collection allows you to store all your things in a stylish stackable box, with a spring loaded pinch lid.



126.47 hrs



15 pcs



0.30 mm
0.20 mm



0.40 mm



PLA
PET



1871 g



Prusa
MK3/S/S+

[Hobby & Makers](#) > [Organizers](#)

Tags: [box](#) [organizer](#) [spring](#) [pinch](#)

General

the box comes in 12 different heights which can be seen in the table below.

Name	External Box Width [mm]	External Box Depth [mm]	External Box Height [mm]	Opening Width [mm]	Opening Depth [mm]	Internal Height [mm]	Total Height With Lid [mm]
PinchBox_General_14	100	100	35	88	88	14	40
PinchBox_General_29	100	100	50	88	88	29	55
PinchBox_General_44	100	100	65	88	88	44	70
PinchBox_General_59	100	100	80	88	88	59	85
PinchBox_General_74	100	100	95	88	88	74	100
PinchBox_General_89	100	100	110	88	88	89	115
PinchBox_General_104	100	100	125	88	88	104	130
PinchBox_General_119	100	100	140	88	88	119	145
PinchBox_General_134	100	100	155	88	88	134	160
PinchBox_General_149	100	100	170	88	88	149	175
PinchBox_General_164	100	100	185	88	88	164	190
PinchBox_General_179	100	100	200	88	88	179	205

Components

The Box

Name: "PinchBox_General_xx" (where the xx is the internal height of the box see overview table in pictures)

Material: can be printed in any material, i have used PLA.

Support: not necessarily needed but i have used some which is also included in the G-Code and 3mf files.

Print Orientation: Default STL orientation.

The Lid

Name: "PinchBox_Lid"

Material: can be printed in any material, i have used PLA.

Support: not needed.

Print Orientation: Default STL orientation.

The Lid Cover

Name: "PinchBox_LidCover"

Material: can be printed in any material, i have used PLA.

Support: not needed.

Print Orientation: Default STL orientation.

The Spring

Name: "PinchBox_Spring"

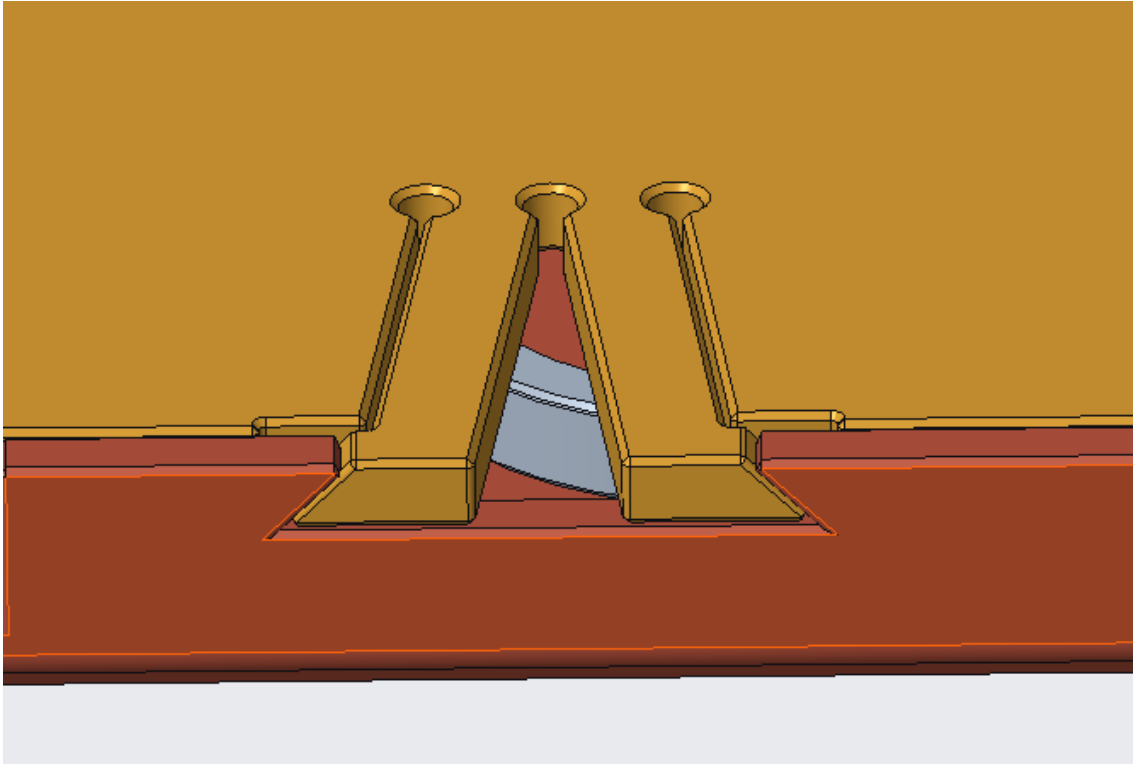
Material: should be a somewhat flexible material, i recommend PETG.

Support: not needed.

Print Orientation: Default STL orientation.

Assembly

1. The spring is placed in the lid and the lid cover is then mounted on the back of the lid.
2. The lid cover is mounted on the backside of the lid. the flexible fingers on the cover needs to be pushed together and then into the slot on the lid. This can be tricky the first time.
- 3.



Comments

Happy Printing! and remember to share your results and experiences.

Model files

pinchbox_spring.3mf





pinchbox_general_179.stl



pinchbox_general_164.stl



pinchbox_general_29.stl



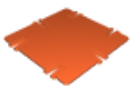
pinchbox_lid.stl



pinchbox_general_44.stl



pinchbox_general_149.stl



pinchbox_lidcover.stl



pinchbox_general_59.stl



pinchbox_general_89.stl



pinchbox_spring.stl



pinchbox_general_134.stl



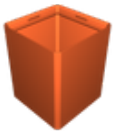
pinchbox_general_14.stl



pinchbox_general_119.stl



pinchbox_general_74.stl



pinchbox_general_104.stl



pinchbox_lid.3mf



pinchbox_general_149.3mf



pinchbox_general_164.3mf



pinchbox_general_134.3mf



pinchbox_general_44.3mf



pinchbox_spring.3mf



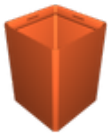
pinchbox_general_179.3mf



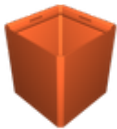
pinchbox_lidcover.3mf



pinchbox_general_29.3mf



pinchbox_general_119.3mf



pinchbox_general_89.3mf



pinchbox_general_59.3mf



pinchbox_general_74.3mf



pinchbox_general_14.3mf



pinchbox_general_104.3mf

Print files



pinchbox_lid_03mm_pla_mk3s_1h29m.gcode

🌀 PLA 📏 0.40 mm 📏 0.30 mm ⌚ 1.49 hrs ⚖️ 25 g 🖨️ Prusa MK3/S/S+



pinchbox_general_149_03mm_pla_mk3s_15h27m.gcode

🌀 PLA 📏 0.40 mm 📏 0.30 mm ⌚ 15.45 hrs ⚖️ 224 g 🖨️ Prusa MK3/S/S+



pinchbox_spring_02mm_petg_mk3s_51m.gcode

🌀 PET 📏 0.40 mm 📏 0.20 mm ⌚ 0.84 hrs ⚖️ 7 g 🖨️ Prusa MK3/S/S+



pinchbox_general_104_03mm_pla_mk3s_11h46m.gcode

🌀 PLA 📏 0.40 mm 📏 0.30 mm ⌚ 11.77 hrs ⚖️ 173 g 🖨️ Prusa MK3/S/S+



pinchbox_lidcover_03mm_pla_mk3s_1h7m.gcode

🌀 PLA 📏 0.40 mm 📏 0.30 mm ⌚ 1.11 hrs ⚖️ 19 g 🖨️ Prusa MK3/S/S+



pinchbox_general_179_03mm_pla_mk3s_17h50m.gcode

🌀 PLA 📏 0.40 mm 📏 0.30 mm ⌚ 17.84 hrs ⚖️ 259 g 🖨️ Prusa MK3/S/S+



pinchbox_general_134_03mm_pla_mk3s_14h10m.gcode

🌀 PLA 📏 0.40 mm 📏 0.30 mm ⌚ 14.17 hrs ⚖️ 207 g 🖨️ Prusa MK3/S/S+



pinchbox_general_59_03mm_pla_mk3s_8h4m.gcode

🌀 PLA 📏 0.40 mm 📏 0.30 mm ⌚ 8.06 hrs ⚖️ 121 g 🖨️ Prusa MK3/S/S+



pinchbox_general_119_03mm_pla_mk3s_12h57m.gcode

🌀 PLA 🌀 0.40 mm ≡ 0.30 mm ⌚ 12.96 hrs ⚖️ 190 g 🖨️ Prusa MK3/S/S+



pinchbox_general_74_03mm_pla_mk3s_9h17m.gcode

🌀 PLA 🌀 0.40 mm ≡ 0.30 mm ⌚ 9.28 hrs ⚖️ 139 g 🖨️ Prusa MK3/S/S+



pinchbox_general_89_03mm_pla_mk3s_10h30m.gcode

🌀 PLA 🌀 0.40 mm ≡ 0.30 mm ⌚ 10.50 hrs ⚖️ 156 g 🖨️ Prusa MK3/S/S+



pinchbox_general_29_03mm_pla_mk3s_5h37m.gcode

🌀 PLA 🌀 0.40 mm ≡ 0.30 mm ⌚ 5.62 hrs ⚖️ 87 g 🖨️ Prusa MK3/S/S+



pinchbox_general_44_03mm_pla_mk3s_6h51m.gcode

🌀 PLA 🌀 0.40 mm ≡ 0.30 mm ⌚ 6.84 hrs ⚖️ 104 g 🖨️ Prusa MK3/S/S+



pinchbox_general_14_03mm_pla_mk3s_4h24m.gcode

🌀 PLA 🌀 0.40 mm ≡ 0.30 mm ⌚ 4.40 hrs ⚖️ 70 g 🖨️ Prusa MK3/S/S+



pinchbox_general_164_03mm_pla_mk3s_16h38m.gcode

🌀 PLA 🌀 0.40 mm ≡ 0.30 mm ⌚ 16.64 hrs ⚖️ 242 g 🖨️ Prusa MK3/S/S+

License ©

This work is licensed under a
Creative Commons (4.0 International License)



Attribution—Noncommercial—No Derivatives

- ✖ | Sharing without ATTRIBUTION
- ✖ | Remix Culture allowed
- ✖ | Commercial Use
- ✖ | Free Cultural Works
- ✖ | Meets Open Definition