

Stealth Press - Dremel Add-On



Iconic FAB

[VIEW IN BROWSER](#)

updated 24. 2. 2024 | published 24. 2. 2024

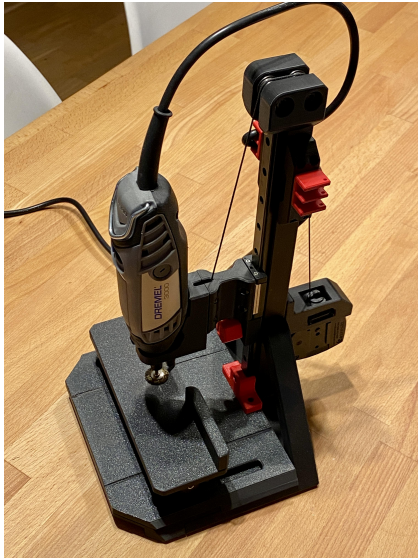
Summary

Elevate your creative capabilities with the Dremel Add-On for Stealth Press.

[Hobby & Makers](#) > [Tools](#)

Tags: [dremel](#) [dremelaccessories](#) [dremelattachment](#)
[dremelholder](#) [dremel3000](#) [dremelaccessories](#)
[dremelworkstation](#) [stealthpress](#)

Unleash your creativity with the Stealth Press Dremel Add-On.



The Dremel (rotary tool) Add-On is the perfect companion for the **Stealth Press**, enabling you to elevate your crafting experience. Its seamless integration, versatility, and precision make it an essential tool for anyone who seeks to unleash their creativity. This mod seamlessly integrates with the Stealth Press core, unlocking a broader spectrum of use cases and applications.

You can now tackle a wider range of projects easier and faster - from fabricating engineering components to crafting intricate jewellery by using variety of rotary tool accessories.

More information about Stealth Press (core) and project files are [here](#).

BOM (bill of materials)

Mechanical parts	QTY
M3x8 SHCS — Bolts (Source: INT)	20
M3x12 SHCS — Bolts (Source: INT)	2
M3x16 SHCS — Bolts (Source: INT)	6
M3x30 SHCS — Bolts (Source: INT)	2
M3 — Threaded Inserts — M3x5x4 (M3 x (OD)5 x (L)4 — VORON) (Source: INT)	13
+ All BOM parts for Stealth Press platform as a core .	
Printed Parts	
Printed parts	22

ASSEMBLY MANUAL



Full assembly manual + special complimentary sandwich plate model, **available for project supporters only**.

PRINT GUIDELINES

Here are print guidelines for you to follow in order to have decent success with printing parts:

3D PRINTING PROCESS	FDM (fused deposition modeling)
---------------------	---------------------------------

INFILL TYPE	Grid, Gyroid, Honeycomb, Triangle or Cubic
MATERIAL	ASA, ASA-CF, ABS, ABS+, ABS-CF
INFILL PERCENTAGE	40% - 60%
LAYER HEIGHT	Recommended: 0.2mm
WALL COUNT	Recommended: 4
SOLID TOP/BOTTOM LAYERS	Recommended: 5
EXTRUSION WIDTH	Forced 0.4mm

Side notes to the print guidelines

PLA, PLA+, and PETG are also considerable filament choices. However, take into account that power tools radiates some indirect heat. **The usage of less temperature-stable filaments may result in part deformations over time.**

A wall count of 4 is an **absolute must** to ensure the structural integrity of the parts. There is no need to go over the top with this. **4 walls are perfectly fine for this particular build.**

File naming convention for printed parts

The parts use this naming convention:

- **PRIMARY COLOR** — These files will have nothing at the start of the filename.
Example: dremel_mount_x1.stl
- **ACCENT COLOR** — Files have “[a]” to the front of any STL file that is intended to be printed with accent color. Example:
[a]_strain_relief_7mm_(L)_x1
- **LEFT / RIGHT SIDE MATTERS** — Files have “(L)” or “(R)” in the STL file name, where it does any difference to the build. Example:
[a]_strain_relief_7mm_(L)_x1.stl
If there is no difference in terms of side, simply amount of parts required for build is stated as “filename_X1.stl” or “..._X2.stl”.
- **TOOL/HELPER** — Files have “[t]” to the front of any STL file that is intended to be printed with accent color. Example: [t]
[a]_MGN12_assembly_tool_x1
- **COUNT OF PARTS** — Files have “x1” to “x4” at the end of any STL file. The number represents the count of identical parts to be printed. Example: **[a]_m5_1mm_spacer_x4** (In this case you will need to print 4 identical spacers).

Supported rotary power tools

Project is built and tested with Dremel 3000 series. Other models and other brands sharing the same dimensions for main attachment screw might fit.

Supported rotary tool accessories

Any.

Credits and acknowledgements

- VORON and ARMCHAIR ENGINEERING Discord communities for being able to discuss, receive feedback and gather ideas for this project.
- **KB3D**, **DFH** and **LECKTOR** for creating (**supported**) KITS for the **Stealth Press Heat-set Insert Press** and supporting my work.
- Many other exceptionally clever and good people in 3DP community for building the project, encouraging me to push it forward and supporting it in many ways.

CHANGELOG

Date	Change
22.01.2024	Initial version (Rev1)

Model files



dremel_mount_x1.stl

☐ Mount for Dremel 3000 series and dimensionally compatible



sandwich_plate_x1.stl

☐ Sandwich plate over the top of Stealth Press table



a_sandwich_plate_mount_x1.stl

☐ Mount for securing sandwich plate to the linear rail



a_strain_relief_7mm_l_x1.stl

☐ Strain relief for 7mm wide power cables, left



a_strain_relief_7mm_r_x1.stl

☐ Strain relief for 7mm wide power cables, right



rail_carriage_leg_x1.stl

☐ Leg for attaching to linear rail carriage.



ta_mgn12_assembly_tool_x1.stl

☐ MGN12 assembly / disassembly helper tool



brake_block_x1.stl

☐ Brake block



a_brake_clutch_x1.stl

☐ Brake clutch



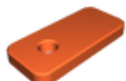
a_knob_brake_x1.stl

☐ Use this for brake. Print x1.



a_knob_rail_brake_x2.stl

☐ Use these for table rails. Print x2.



a_sliding_block_x2.stl

☐ Sliding blocks x 2



rail_brake_l_x1.stl

☐ Table brake



rail_brake_r_x1.stl

☐ Table brake



a_angle_slide_nut_x2.stl

☐ Securing nuts for angle slide. Print x2.



angle_slide_l_x1.stl

☐ Angle slide, left. Allows to skew table.



angle_slide_r_x1.stl

☐ Angle slide, right. Allows to skew table.



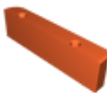
sliding_block_middle_l_x1.stl

☐ Sliding block, left. Allows to move table in Y dimension.



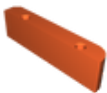
sliding_block_middle_r_x1.stl

☐ Sliding block, right. Allows to move table in Y dimension.



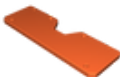
table_guard_l_x1.stl

☐ Table guard, left



table_guard_r_x1.stl

☐ Table guard, right



table_bottom_x1.stl

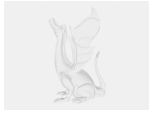
☐ Work table



stealth_press_dremel_add-on_rev10.step

☐ CAD file in .STEP format - REV1.0

Other files



stealth_press_dremel_add-on_manual_preview_rev10.pdf

☐ Preview version for assembly manual

License

This work is licensed under a
GNU



General Public License v3.0

- ✗ | Sharing without ATTRIBUTION
- ✓ | Remix Culture allowed
- ✓ | Commercial Use
- ✓ | Meets Open Definition
- i | Share under the same license