

3D MODEL ONLY



## Geometric Low Poly Cat

**Phaseworks3D**[VIEW IN BROWSER](#)

updated 15. 1. 2024 | published 15. 1. 2024

### Summary

2.5D display art of a cat, depicted in a low poly geometric line art style focused on hexagons. Display stand included.

[Art & Design](#) > [Sculptures](#)

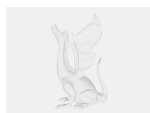
Tags: [pet](#) [cat](#) [animal](#) [low](#) [poly](#) [art](#) [geometric](#) [gift](#)  
[abstract](#) [decorative](#) [contemporary](#) [line](#) [hexagons](#)  
[polygons](#) [owner](#)

**If you download the model, please don't forget to leave a like.  
Thank you! <3**

This design takes the classic elegance of a feline and reimagines it through the lens of modern art, using a blend of polygons and hexagons to create a stunning, faceted masterpiece. Each angular line and hexagonal pattern is intricately arranged to capture the grace and mystique of a cat, resulting in a piece that's both contemporary and timeless. Ideal for cat lovers and aficionados of abstract art, this 3D print file offers a unique way to infuse your space with a touch of sophistication and geometric charm. Download now and add a purr-fectly polygonal flair to your art collection!

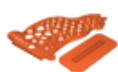
To reduce the risk of stringing, I recommend you reduce your outer wall speed to 100mm/s, this has given me consistently clean results without the need to modify other settings.

## Model files



**hexagon-cat.3mf**

📄 Bambu Studio 3MF File



**hexagon-cat.stl**

📄 STL File

## License ©

This work is licensed under a  
[Creative Commons \(4.0 International License\)](#)



**Attribution—Noncommercial—No Derivatives**

- ✗ | Sharing without ATTRIBUTION
- ✗ | Remix Culture allowed
- ✗ | Commercial Use
- ✗ | Free Cultural Works
- ✗ | Meets Open Definition