



Kitchen Drawer-in-drawer magnetic lock lever & hidden drawer handles



Pedja

[VIEW IN BROWSER](#)

updated 15. 1. 2024 | published 15. 1. 2024

Summary

Magnetic lock lever for kitchen drawer in drawer system.

[Household](#) > [Kitchen](#)

Tags: [kitchen](#) [lock](#) [drawers](#) [magnetic](#) [lever](#)
[drawerorganizer](#)

Kitchen Drawer-in-drawer magnetic lock lever and hidden drawer handles.

Lever mechanism printed in PETG 100% infill.

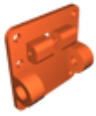
Small rubber band inside of lever mechanism. Steel pins installed for rubber support.

Lever handle and base connection with M3 screw.

Magnet on mechanism and small steel plate on drawer fixed with epoxy glue.

Hidden drawer handle printed in 20% infill.

Model files



base.stl



drawer_handle_r.stl



gripper.stl



handle.stl



drawer_handle_l.stl

License

This work is licensed under a
[Creative Commons \(4.0 International License\)](https://creativecommons.org/licenses/by-nc-sa/4.0/)



Attribution—Noncommercial—Share Alike

- ✗ | Sharing without ATTRIBUTION
- ✓ | Remix Culture allowed
- ✗ | Commercial Use
- ✗ | Free Cultural Works
- ✗ | Meets Open Definition

