

Modular Filament Spool Rack Rods



Echoman20

[VIEW IN BROWSER](#)

updated 15. 1. 2024 | published 15. 1. 2024

Summary

6 inch segments of female to male threaded rod to place in Lumanieri's Modular Filament Spool Rack Feet.

[3D Printers](#) > [Accessories](#)

Tags: [spool](#) [modular](#) [spoolholder](#) [filamentspoolholder](#) [rack](#)
[filamentholder](#)

This is a modular rod model used for @Lumanieri's Modular Filament Spool Rack Feet. Instead of buying wood, metal, or plastic rod/piping and cutting it to length you can print 6 inch sections of rods and screw them together at whatever 6 inch increments you want. Adding the endcaps will make the rod look much more finished. 5 6 inch sections will result in a 32 inch rod. As a suggestion, since it is a printed rod I would use one of Lumanieri's modular feet about every 8-10 inches of rod length as shown in the photos.

Link to Lumanieri's modular feet: <https://www.printables.com/model/89187-modular-filament-spool-rack-feet>

Print Settings:

Material: PLA (or whatever you prefer)

Layer Height: 0.20 mm

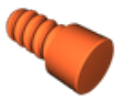
Walls: 4-6 walls for strength

Infill: 15% Gyroid

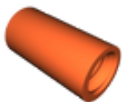
Supports: No

Brim: Yes

Model files



rod-threaded-cap-male.stl



rod-threaded-cap-female.stl



rod-threaded-mid.stl

License

This work is licensed under a
[Creative Commons \(International License\)](#)



Public Domain

- ✓ | Sharing without ATTRIBUTION
- ✓ | Remix Culture allowed
- ✓ | Commercial Use
- ✓ | Free Cultural Works
- ✓ | Meets Open Definition

