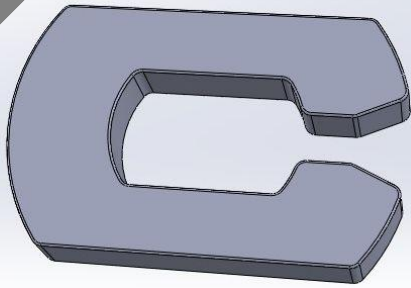


3D MODEL ONLY



## Proxxon chuck key for the ibs/e & ib/e



Fredrik Svanholm

[VIEW IN BROWSER](#)

updated 21. 1. 2024 | published 21. 1. 2024

### Summary

Based on the original Proxxon chuck key, but slightly thicker (6mm vs 4mm)

[Hobby & Makers](#) > [Tools](#)

Tags: [tool](#) [key](#) [chuck](#) [micromot](#) [proxxon](#) [collet](#)  
[tightening](#) [ibse](#) [ibe](#)

Works great in PLA with 80% infill

### Model files



[proxxon-collet-tightening-tool.stl](#)



[proxxon-collet-tightening-tool-without-hole.stl](#)

# License

This work is licensed under a  
**Creative Commons (4.0 International License)**



**Attribution-ShareAlike**

- 
- ✗ | Sharing without ATTRIBUTION
  - ✓ | Remix Culture allowed
  - ✓ | Commercial Use
  - ✓ | Free Cultural Works
  - ✓ | Meets Open Definition