

## K&M Keyboard Stand Drink Holder



jrsone

[VIEW IN BROWSER](#)

updated 16. 1. 2024 | published 16. 1. 2024

### Summary

This drink holder works with K&M table-style keyboard stands, such as the 18950 and 18953 models.



9.06 hrs



2 pcs



0.20 mm



0.40 mm



PET



80 g



Prusa  
MK3/S/S+

[Gadgets](#) > [Audio](#)

Tags: [magnetic](#) [keyboardstand](#) [magneticholder](#) [drinkholder](#)  
[magneticmount](#)

This two-piece assembly slides onto the [K&M Keyboard Stand Headphone Hanger](#) to hold a drink within arm's reach while playing.







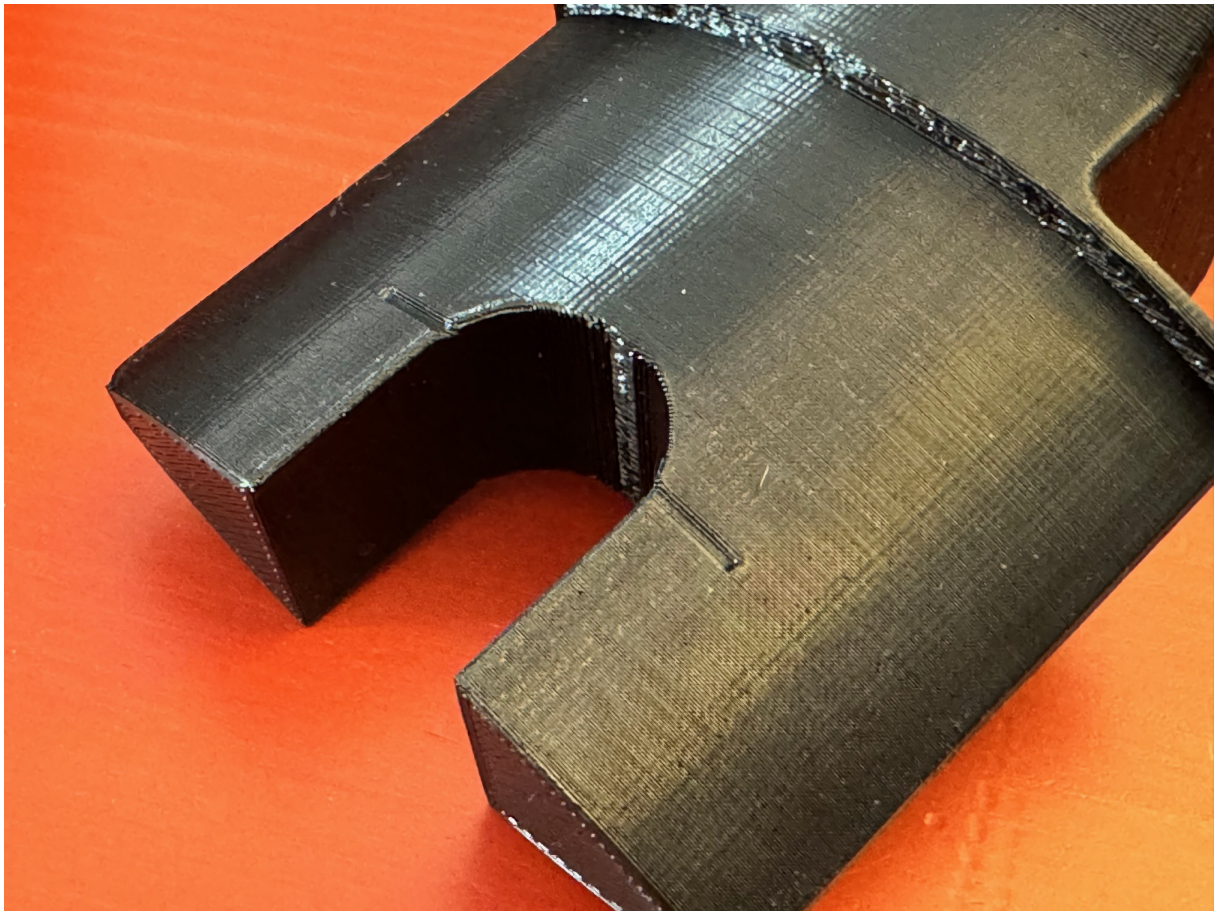
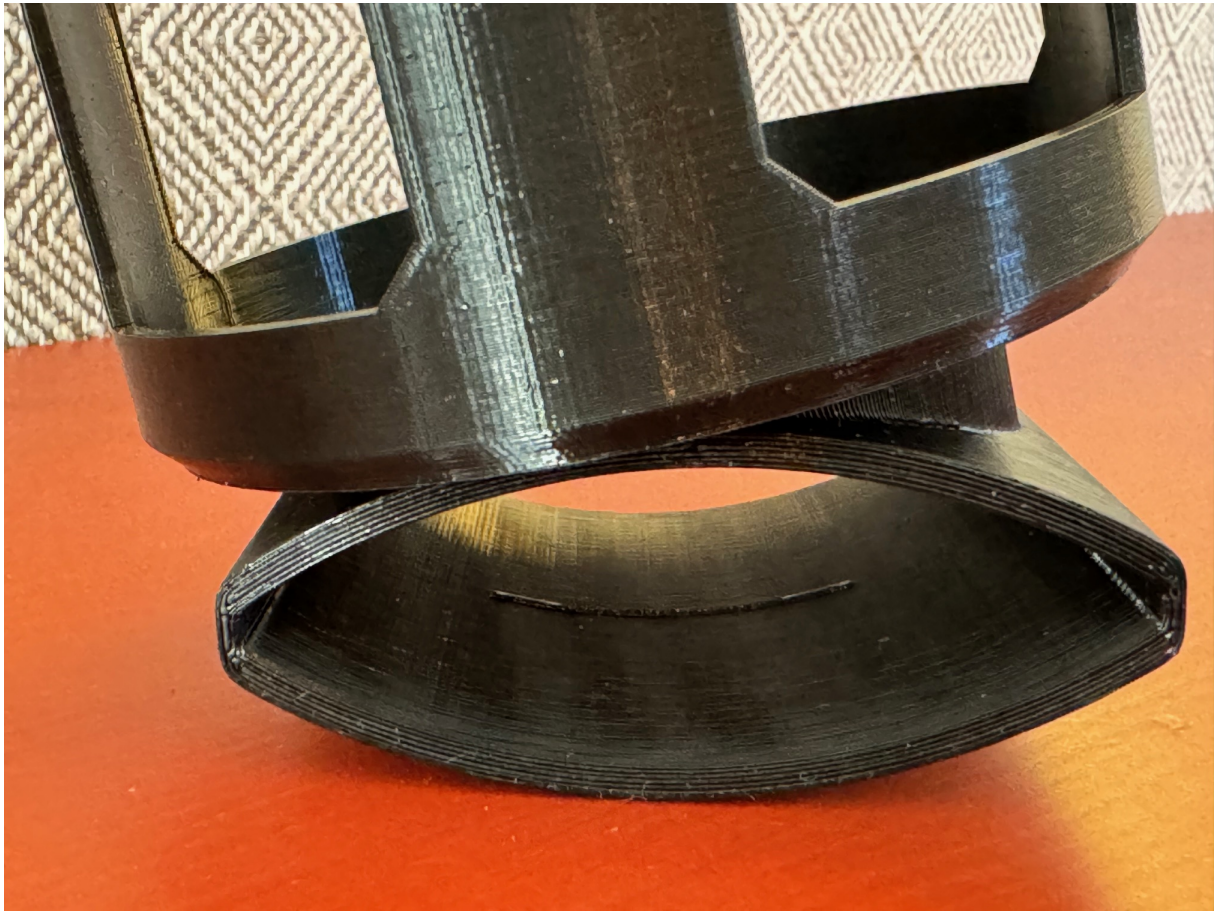
The drink holder accounts for the 10 degree angle of the legs of the K&M stand and is reversible, so it can go on either side of the stand.







There is a small ridge on the top/bottom of the inside surface of the base, which snaps into corresponding grooves in the headphone hanger. This makes it easy enough to take on/off as needed, but secure enough to stay in place.

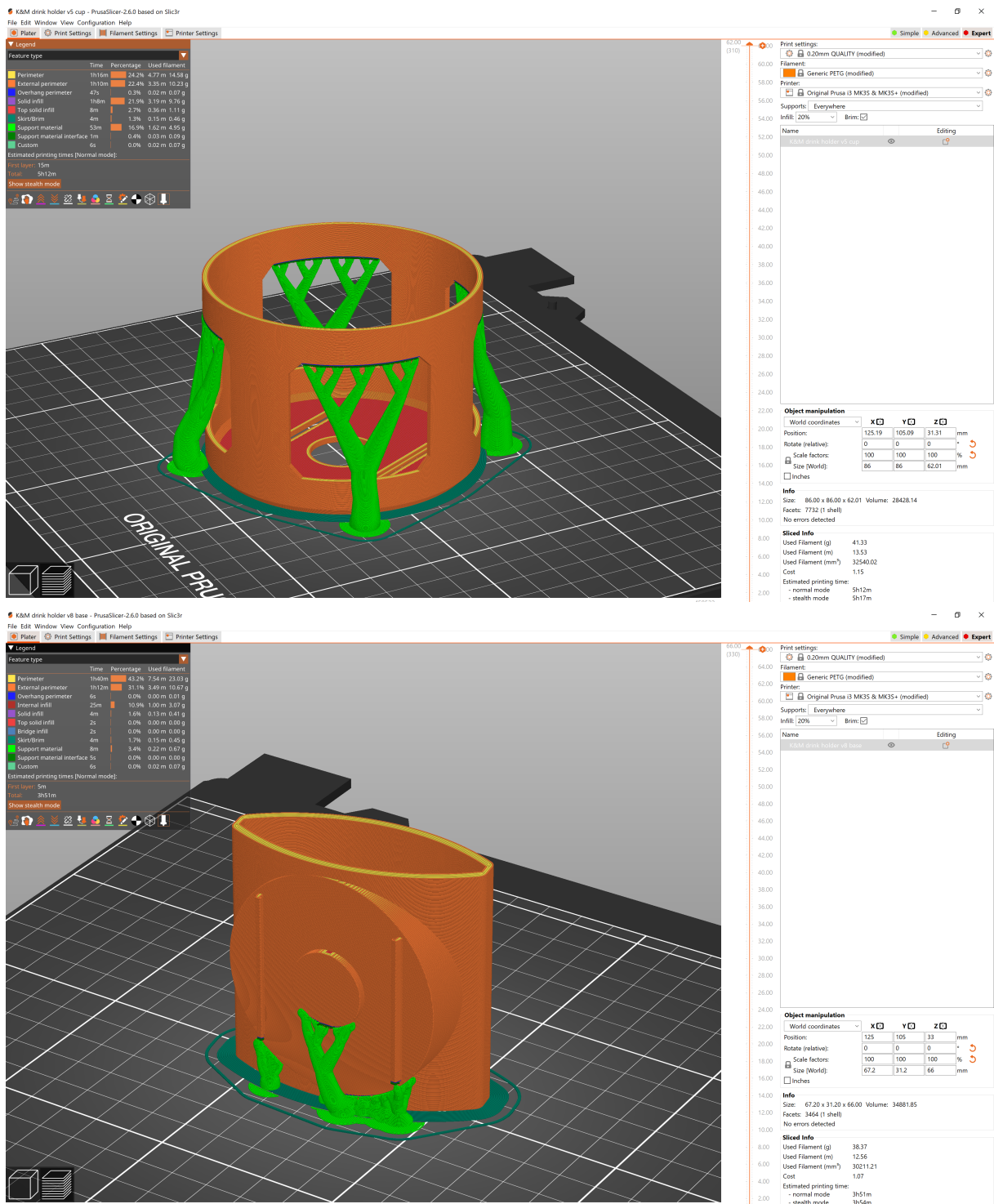




The two-piece assembly of the base piece and cup holder also snaps together, but requires a bit more force as it's supposed to be semi-permanent. This was done to allow optimal printing orientation for each piece.

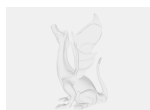


I printed both the cup and base out of PETG, using organic supports, with the orientations on the build platform as shown:



Enjoy!

## Model files



km-drink-holder-v8-base.step





**km-drink-holder-v8-base.3mf**

---



**km-drink-holder-v5-cup.3mf**

---



**km-drink-holder-v5-cup.step**

## Print files



**km-drink-holder-v8-base\_02mm\_petg\_mk3s\_3h51m.gcode**

PET 0.40 mm 0.20 mm 3.86 hrs 38 g Prusa MK3/S/S+

---



**km-drink-holder-v5-cup\_02mm\_petg\_mk3s\_5h12m.gcode**

PET 0.40 mm 0.20 mm 5.20 hrs 41 g Prusa MK3/S/S+

## License

This work is licensed under a  
[Creative Commons \(4.0 International License\)](#)



**Attribution-ShareAlike**

---

- ✗ | Sharing without ATTRIBUTION
- ✓ | Remix Culture allowed
- ✓ | Commercial Use
- ✓ | Free Cultural Works
- ✓ | Meets Open Definition

