



Desiccant Pouch

K KICW

[VIEW IN BROWSER](#)

updated 21. 1. 2024 | published 21. 1. 2024

Summary

A small papercraft pouch for holding desiccant or other small objects

[3D Printers](#) > [Accessories](#)

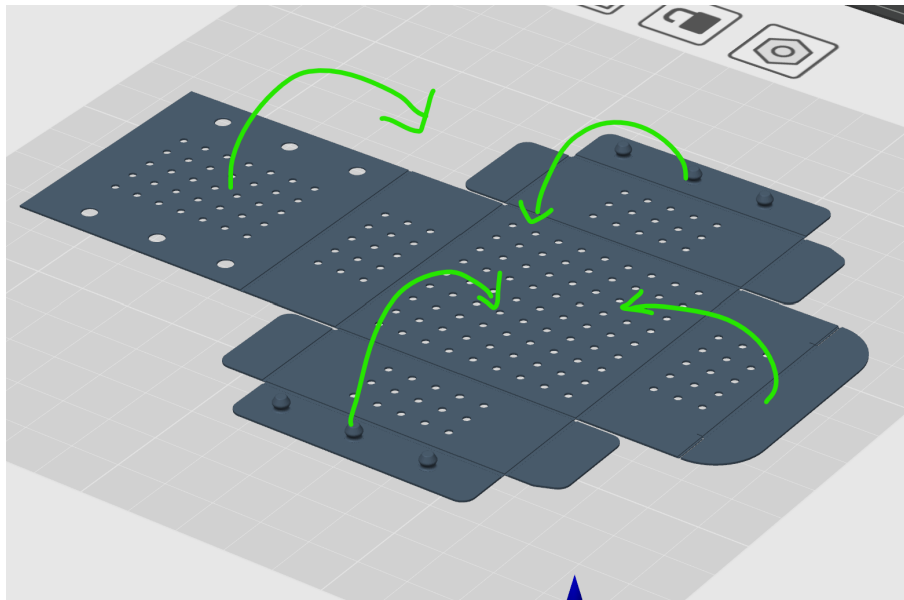
Tags: [box](#) [foldable](#) [desiccant](#) [papercraft](#) [giftbox](#) [pouch](#)

New cylindrical design [available!](#)

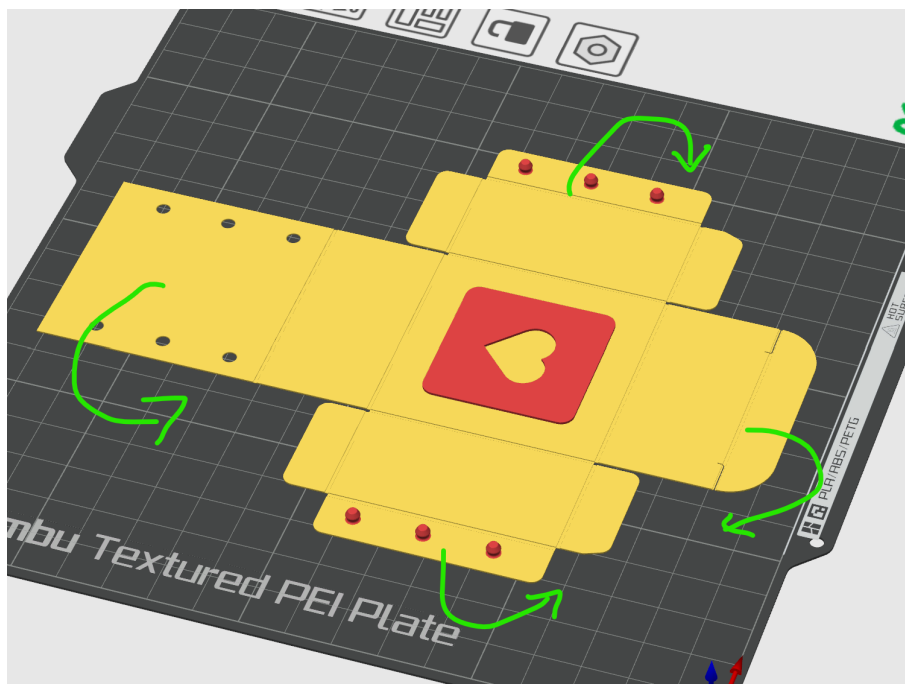
I originally created this simple 2-layer folding box for holding desiccant. It can also be used as a general-purpose organizer/gift/packaging box.

Features

- Low filament consumption 6~9 grams per box
- Minimal assembly required: folding + pushing the pins to secure the back panel
- Can be folded in both ways!
 - the bed facing side can be folded to the exterior to display build plate texture (Configuration A)



- Or
 - the bed facing side can be folded to the interior for custom dual color or other 3d designs on the box surface (Configuration B)

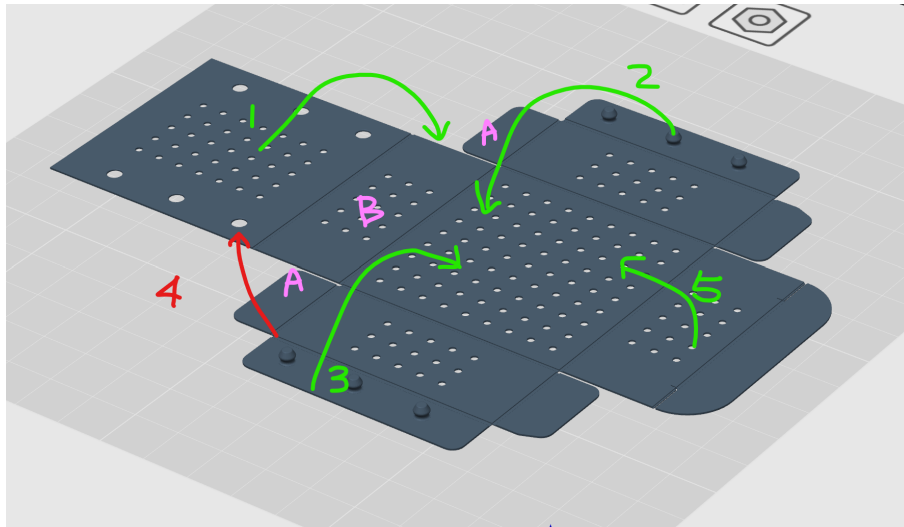


- Sizes:
 - 50 x 50 x 20 mm
 - 50 x 50 x 25 mm
 - 48 x 48 x 48 mm (This is the maximum size fittable on a Bambu A1 Mini bed (18 x 18 cm))
- Styles:
 - Perforated (for desiccant)
 - Dual color decors: Heart/Star
 - Blanks (for remix/mods)

Assembly

The assembly is very straightforward. Just fold the print in one of the directions, and push the pins through the holes on the back panel. You should hear a click when the pins are snapped into place.

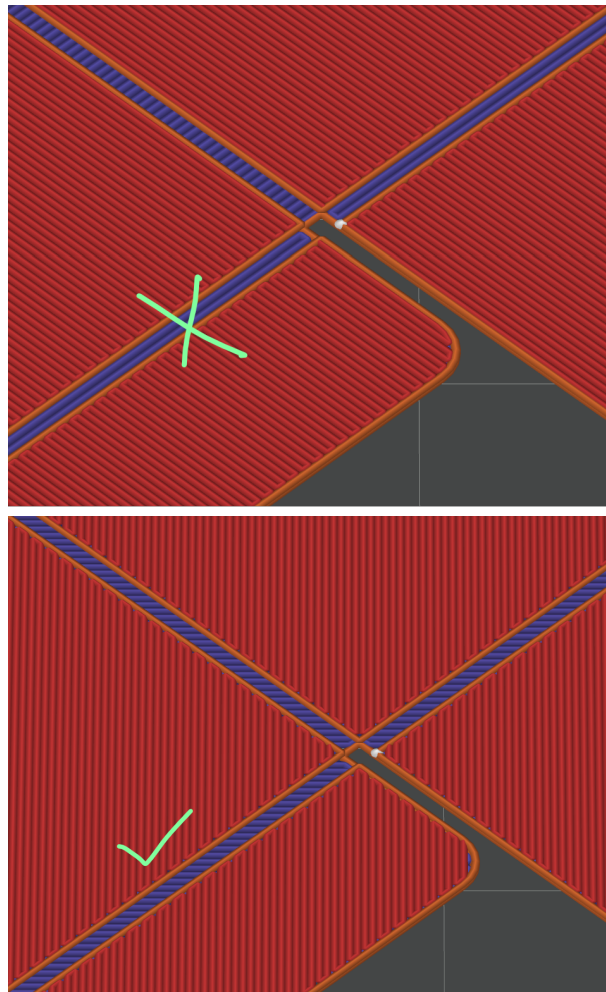
Taking configuration A as an example:



1. (Green) fold panels as shown via arrows 1, 2 and 3.
2. (Pink) keep the 2 panels A above panel B.
3. (Red) snap the six pins
4. Close the box by folding over 5 (it should look like any other packing box by now).

Notes & Tips

- I have only tested printing this using Bambu Studio, but here are some observations:
- Use single walls, at least on the first layer - you want the infill to cross the hinges (walls can block them) as mentioned below. My prints are using 0.4 mm nozzle and 0.2 mm layer height.
- Always ensure infills are crossing the hinges (with great extent preferably) in the first layer; otherwise it will fall apart. This means when creating profiles for 48 x 48 x 48, since it was placed diagonally, the infill rotation needs to be rotated for another 45 degrees from default



- The box can be folded both ways! When folded with the top layer outside, the pins will be visible, but it also allows you to add some fun designs on the box:
- Using 0.16 layer height may save you a little bit of filament for a less rigid box.
- I haven't played too much around ironing as it increases the print time drastically, and sometimes looks/feels worse than not using it.
- PLA Matte looks more opaque than PLA Basic (Bambu). I haven't tried PETG yet but assume it would be more durable.
- I don't have build plates with fancy textures but can imagine those would look very neat on this print.
- Finally, let me know if you need more size options; or have any suggestions. Happy printing!

Maker world version: <https://makerworld.com/en/models/139888>

Model files



dry-boxes.3mf



star-boxes.3mf



heart-boxes.3mf



blanks.3mf

License ©



This work is licensed under a
Creative Commons (4.0 International License)

Attribution—Noncommercial—Share Alike

- ✗ | Sharing without ATTRIBUTION
- ✓ | Remix Culture allowed
- ✗ | Commercial Use
- ✗ | Free Cultural Works
- ✗ | Meets Open Definition