



Toadfish Cup Holder with handle

T Tank

[VIEW IN BROWSER](#)

updated 16. 1. 2024 | published 16. 1. 2024

Summary

Cup holder with handle to fit the new toadfish insulated tumbler 20 oz.

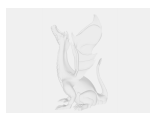
[Household](#) > [Kitchen](#)

Tags: [cup](#) [handle](#) [yeti](#)

This is my first design using fusion 360. It is not perfect but was a good learning project. Fits well just has some cosmetic issues mostly.

I was combining rectangles for the arm of the handle and there is a weird offset. Will have to look at it and see what's going on with it.

Model files



toadfish-v1.step



toadfish-v1-v1.stl

License

This work is licensed under a
Creative Commons (4.0 International License)



Attribution—Noncommercial—Share Alike

- ✗ | Sharing without ATTRIBUTION
- ✓ | Remix Culture allowed
- ✗ | Commercial Use
- ✗ | Free Cultural Works
- ✗ | Meets Open Definition