



## LEGO DUPLO - Thomas the Tank Engine for 10874 or 10875



BOFH 1337

[VIEW IN BROWSER](#)

updated 16. 1. 2024 | published 16. 1. 2024

## Summary

Thomas the Tank Engine as a replaceable top for the motorized chassis (Duplo 10874 / 10875)

[Toys & Games](#) > [Other Toys & Games](#)

Tags: [duplo](#) [lego](#) [train](#) [thomas](#) [10874](#) [10875](#)

This is a replaceable top for the motorized train chassis of the Duplo Sets 10874 or 10875.

**No MMU / AMS required**, just some screws (**Spax 3x16mm**), colored filament and **glue**.

(the face needs to be painted if you want to)

### How to build it:

1. print all the parts in the color of your liking
2. glue in the windows, numbers, coal, roof and inserts in the base
3. glue in the smokebox-rings in the smokebox
4. screw in the base to the undercarriage (from the underside of it)
5. slide the smokebox and chimney into the base and screw it on
6. optional: paint the face

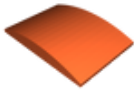
7. glue the face onto the chimney faceplate
8. glue the light onto the undercarriage

**Done :)**

## Model files



**numbers\_yellow.stl**



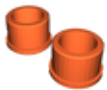
**roof\_black.stl**



**inserts\_red.stl**



**light\_white.stl**



**windows\_yellow.stl**

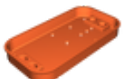


**base\_blue.stl**

☐ base - blue



**smokebox\_rings\_red.stl**



**undercarriage\_red.stl**



**smokebox\_blue.stl**



**coal\_black.stl**



**face\_grey.stl**



**chimney\_black.stl**

## License

This work is licensed under a  
**Creative Commons (4.0 International License)**



**Attribution-NonCommercial**

- ✗ | Sharing without ATTRIBUTION
- ✓ | Remix Culture allowed
- ✗ | Commercial Use
- ✗ | Free Cultural Works
- ✗ | Meets Open Definition