



Not Benchy with modified dry dock.



3DRobotzz

[VIEW IN BROWSER](#)

updated 15. 1. 2023 | published 15. 1. 2023

Summary

I took the Benchy dry dock and modified it so that it had a "wood grain" dock, and would fit a rescaled Not Benchy.



N/A



2 pcs



0.20 mm



0.40 mm



PLA



N/A



Prusa MINI /
MINI+

[Toys & Games](#) > [Other Toys & Games](#)

Tags: [fun](#) [toys](#) [remixes](#) [jokes](#)

Description:

I saw the Benchy Dry dock, and wondered, "Why didn't anybody make a Not Benchy dry dock?"

So I made a dry dock for poor Not Benchy.

Made for a rescaled not benchy. You can try not benchy itself, but I don't recommend it

Instructions:

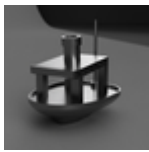
Infill pattern doesn't matter. Infill is 15%. Nozzle diameter should be 0.40 mm. Layer height is optional.

Tips:

Print with supports everywhere. (**Supports are **VERY** hard to remove**)

If you want smother edges, seam position should be nearest. (Doesn't matter if you are going to sand and paint)

This remix is based on



Not Benchy

by JoCADnstuff2021



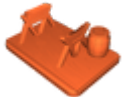
Dry Dock

by Bugman_140

Model files



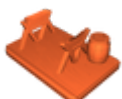
not-benchy-v2.stl



not-benchy-dry-dock.stl



not-benchy-v2.obj



dry-dock-wgrains.obj

Print files



not-benchy-v2_02mm_pla_mini_1h24m.gcode

🌀 PLA 📏 0.40 mm 📐 0.20 mm ⌚ 1.41 hrs ⚖️ 11 g 🖨️ Prusa MINI / MINI+



dry-dock-wgrains_02mm_pla_mini_1h14m.gcode

🌀 PLA 📏 0.40 mm 📐 0.20 mm ⌚ 1.24 hrs ⚖️ 12 g 🖨️ Prusa MINI / MINI+

License ©

This work is licensed under a
[Creative Commons \(4.0 International License\)](#)



Attribution-ShareAlike

- ✗ | Sharing without ATTRIBUTION
- ✓ | Remix Culture allowed
- ✓ | Commercial Use
- ✓ | Free Cultural Works
- ✓ | Meets Open Definition