

Filament Swatch with transparency check (0.2, 0.4, 1.0 & 2.0 mm)



Bollekeil

[VIEW IN BROWSER](#)

updated 16. 1. 2024 | published 16. 1. 2024

Summary

Filament Swatch with transparency check (0.2, 0.4, 1.0 & 2.0 mm)

[3D Printers](#) > [Test Models](#)

Tags: [filament](#) [control](#) [swatch](#) [filamenttest](#) [check](#)
[testdruck](#) [kontrolle](#) [modelltest](#) [durchsichtigkeit](#)
[transparency](#) [transparencycheck](#) [filamentcheck](#)

I think the Bambu examples are great, but I would also like to know how transparent the filament is/can be. That's why I recreated the Bambu Swatch and installed three transparent controls.

With

- 0.2 mm
- 0.4 mm
- 1.0 mm
- 2.0 mm (=thickness of the printed part)

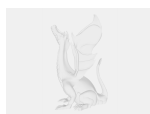
In my uploaded print profile, four patterns can be printed at the same time with one AMS.

Because the part is the original size, they fit into all holders that are already available on Makerworld.

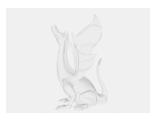
Model files



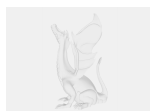
swatchtransparancycheck.stl



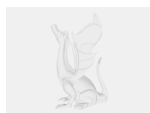
1xswatch_iron.3mf



4xswatch_no-iron.3mf



1xswatch_no-iron.3mf



4xswatch_iron.3mf

License ©



This work is licensed under a
Creative Commons (4.0 International License)

Attribution-NonCommercial

-
- ✗ | Sharing without ATTRIBUTION
 - ✓ | Remix Culture allowed
 - ✗ | Commercial Use
 - ✗ | Free Cultural Works
 - ✗ | Meets Open Definition

