



Mitsubishi AC remote holder for 1C-E



sqroot

[VIEW IN BROWSER](#)

updated 16. 1. 2024 | published 16. 1. 2024

Summary

Remote wall mount for model 1C-E



2.28 hrs



1 pcs



0.20 mm



0.40 mm



PLA



30 g



Prusa MINI /
MINI+

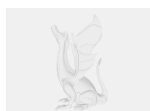
[Household](#) > [Office](#)

Internal dimensions 51x20mm

Model files



mitsubishi-1c-e-holder.stl



mitsubishi-1c-e-holder-v1.f3d

Print files



mitsubishi-1c-e-holder_02mm_pla_mini_2h17m.gcode

🌀 PLA 📏 0.40 mm ≡ 0.20 mm ⌚ 2.28 hrs ⚖️ 30 g 🖨️ Prusa MINI / MINI+

License

This work is licensed under a
[Creative Commons \(4.0 International License\)](#)



Attribution

-
- ✖ | Sharing without ATTRIBUTION
 - ✓ | Remix Culture allowed
 - ✓ | Commercial Use
 - ✓ | Free Cultural Works
 - ✓ | Meets Open Definition