



# PRUSA MK4 Knob Wheels



Peter Martin

[VIEW IN BROWSER](#)

updated 23. 2. 2024 | published 23. 2. 2024

## Summary

PRUSA MK4 PIRATE SHIP WHEEL

[3D Printers](#) > [Prusa Parts & Upgrades](#)

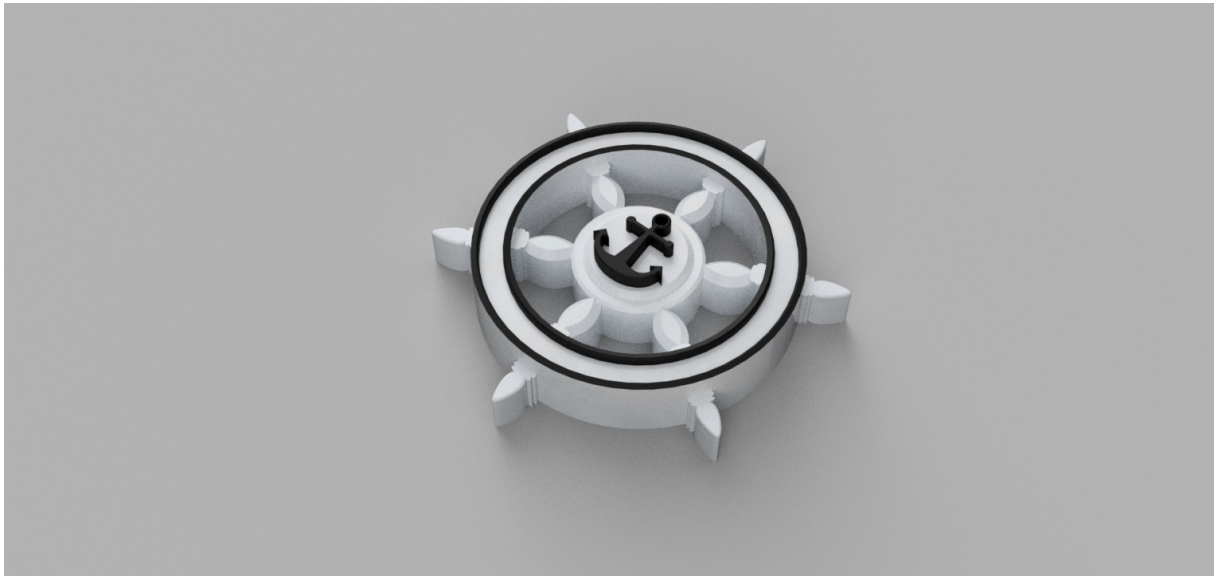
Tags: [prusa](#) [pirate](#) [mk4](#) [lcdknob](#) [pirateship](#) [prusaknob](#)  
[prusamk4](#) [mk4upgrade](#) [pirateshipwheel](#) [prusawheel](#)

Wheels for your Prusa MK4, because turning a wheel is more fun than turning a knob .

They all just push on over the top of the existing knob, although its better to take the knob off first and push that into the wheel. It works very well and feels great to use.

needs supports, but they come away easily.

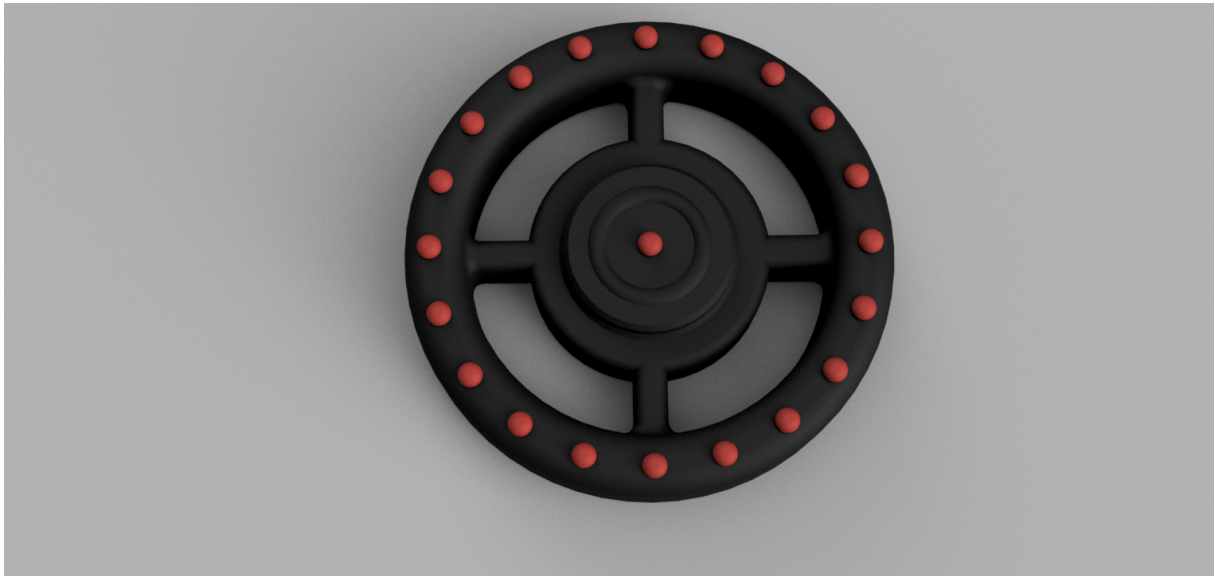
### The SHIP Wheel



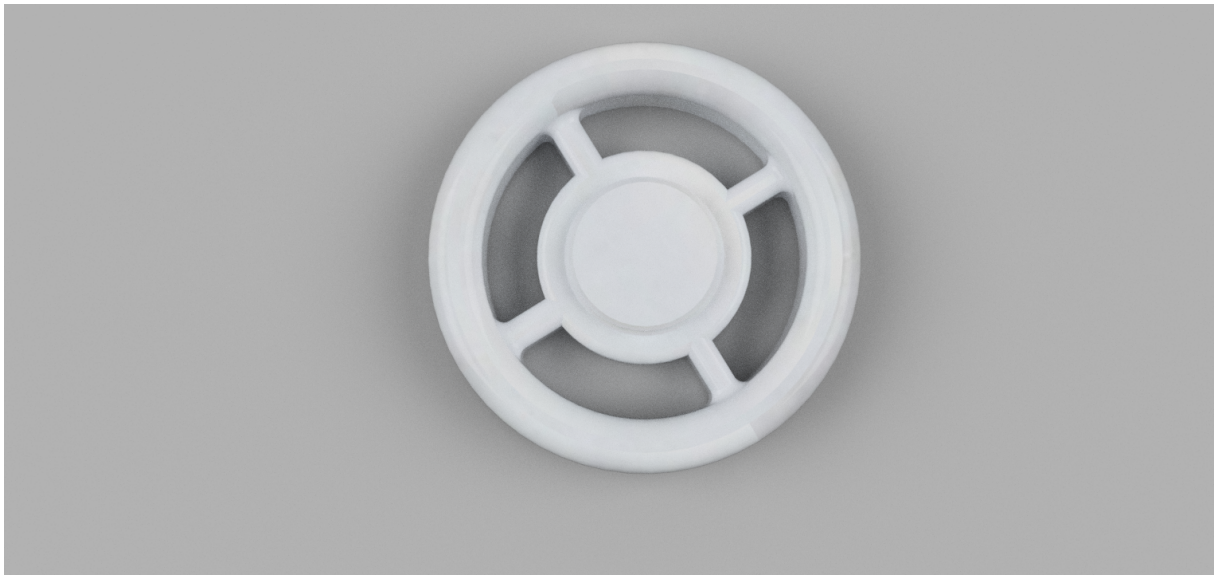
**The DONT PANIC Wheel**



The STEERING Wheel



The PLAIN Wheel



## Model files



**[mk4-pirate-ship-wheel.stl](#)**



**[mk4-wheel-2-circles.stl](#)**



**dont-panic-wheel-prusa-mk4.stl**



**prusa-mk4-plain-wheel.stl**

## License

This work is licensed under a  
[Creative Commons \(4.0 International License\)](#)



### **Attribution**

- ✗ | Sharing without ATTRIBUTION
- ✓ | Remix Culture allowed
- ✓ | Commercial Use
- ✓ | Free Cultural Works
- ✓ | Meets Open Definition