



## Bladesaw - Zelda Breath of the Wild

[VIEW IN BROWSER](#)

updated 8. 5. 2023 | published 8. 5. 2023

### Summary

<https://youtu.be/SOKDACuJSqY> In this project we built the ancient bladesaw from Zelda, Breath of the Wild.

[Costumes & Accessories](#) > [Props](#)

Tags: [thingiverse](#) [prop](#) [link](#) [breathofthewild](#) [cosplay](#)  
[zelda](#) [adafruit](#)

In this project we built the ancient bladesaw from Zelda, Breath of the Wild.

<https://learn.adafruit.com/bladesaw>

This fully 3d printed prop has a motorized chainsaw with tons of NeoPixel LEDs. It has lots of detail making this one of our most intricate builds.

It's pretty massive – over 40 inches in length with over 200 neopixels.

### Print instructions

Licence: Creative Commons - Attribution Category: Props

# This remix is based on



**Bladesaw - Zelda Breath of the Wild**

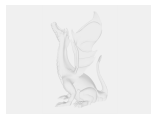
by adafruit

## Model files



**bs-right-handle.stl**

## Other files



**zelda-bladesaw.zip**

[Find source .stl files on Thingiverse.com](#)

## License

This work is licensed under a  
**Creative Commons (4.0 International License)**



### Attribution

- 
- ✗ | Sharing without ATTRIBUTION
  - ✓ | Remix Culture allowed
  - ✓ | Commercial Use
  - ✓ | Free Cultural Works
  - ✓ | Meets Open Definition

