



## PiSCSI Pro Case



PotatoFi

[VIEW IN BROWSER](#)

updated 1. 4. 2024 | published 1. 4. 2024

### Summary

A case for a PiSCSI and Raspberry Pi 4, with Snow White design language to perfectly fit vintage Apple Macintoshes.



8.94 hrs



2 pcs



0.20 mm



0.40 mm



PLA  
PET



103 g



Prusa  
MK3/S/S+

[Hobby & Makers](#) > [Electronics](#)

Tags: [apple](#) [raspberrypi](#) [macintosh](#) [rascsi](#) [piscsi](#)

The PiSCSI Pro Case protects your Raspberry Pi 4 and PiSCSI (formerly known as the RaSCSI), streamlining your vintage computer setup, and looking completely at-home next to your "Snow White" Apple Macintosh computers (like the Macintosh SE/30). Vents provide passive cooling. The case gives access to the Raspberry Pi 4's Ethernet port (for Ethernet adapter emulation), USB-A ports, USB-C connector for power, and MicroSD card slot.

### Case Models

This "Pro" case has room for the PiSCSI and PiSCSI Expansion Board, giving you two DB-25 connectors. If you don't plan to use the PiSCSI Expansion

Board, and only need the single DB-25 connector on the PiSCSI itself, check out the PiSCSI Slim Case.

- **PiSCSI Mini Case:** Raspberry Pi Zero and two DB-25 connectors
- **PiSCSI Slim Case:** Raspberry Pi 4 and one DB-25 connector
- **PiSCSI Pro Case:** Raspberry Pi 4 and two DB-25 connectors

## Features

- "Snow White" design language, which looks great stacked on an external SuperDrive (pictured), with an Apple HD 20SC, or just alongside your Macintosh SE, SE/30, or LC-series machine
- Space for rubber feet
- Slots for passive cooling
- Mechanical strain relief for the top DB-25 connector
- Easy access to the MicroSD card on your Raspberry Pi 4
- Large recessed USB-C connector that should fit any USB-C cable
- An LED light pipe for a 3mm LED, which can be wired to the RaSCSI to blink during activity

## Parts

To completely assemble the case, you'll need a few parts.

- [11mm brass standoffs and M2 screws](#)
- [1/2" rubber feet](#)
- A 3mm LED
  - [Red LED's](#)
  - [Amber LED's](#)

## Links

- [PiSCSI Macintosh Edition on Tindie](#)
- [PiSCSI on Github](#)

## Release Notes

### v1

- Initial release

### v2 (2024-04-01)

- No changes to models
- Removed 1.0 models (they no longer serve a purpose)
- Updated license from non-commercial/no derivatives to a more permissive license

- Uploaded .F3D and .STEP files

## Model files



### **rascsi-pro-case.3mf**

☐ Complete project (sans light pipe) with my preferred settings.

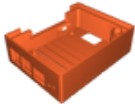
---



### **rascsi-light-pipes.3mf**

☐ Four RaSCSI light pipes (you only need one) with my preferred settings.

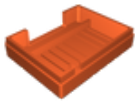
---



### **rascsi-pro-base.stl**

☐ Individual RaSCSI Pro Base.

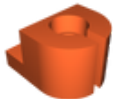
---



### **rascsi-pro-lid.stl**

☐ Individual RaSCSI Pro Lid.

---



### **rascsi-light-pipe.stl**

☐ Individual RaSCSI Light Pipe.

---

### **piscsi-pro-case.step**

☐ Source file.

---

### **piscsi-pro-case.f3d**

☐ Source file.

# Print files



## rascsi-light-pipes\_02mm\_pla\_mk3s\_15m.gcode

🌀 PLA 📏 0.40 mm 📐 0.20 mm ⌚ 0.25 hrs ⚖️ 1 g 🖨️ Prusa MK3/S/S+



## rascsi-pro-case\_02mm\_petg\_mk3s\_8h41m.gcode

🌀 PET 📏 0.40 mm 📐 0.20 mm ⌚ 8.69 hrs ⚖️ 101 g 🖨️ Prusa MK3/S/S+

# License ©

This work is licensed under a  
[Creative Commons \(4.0 International License\)](#)



**Attribution-ShareAlike**

- ✗ | Sharing without ATTRIBUTION
- ✓ | Remix Culture allowed
- ✓ | Commercial Use
- ✓ | Free Cultural Works
- ✓ | Meets Open Definition