

## Ender3 Linear Rails - Eva2.4 - V6 - Titan



dav124415

[VIEW IN BROWSER](#)

updated 16. 1. 2024 | published 16. 1. 2024

### Summary

This is a mod of the Eva2.4 system in order to be able to fit it into the Ender3 when using a front MGM12H rail.

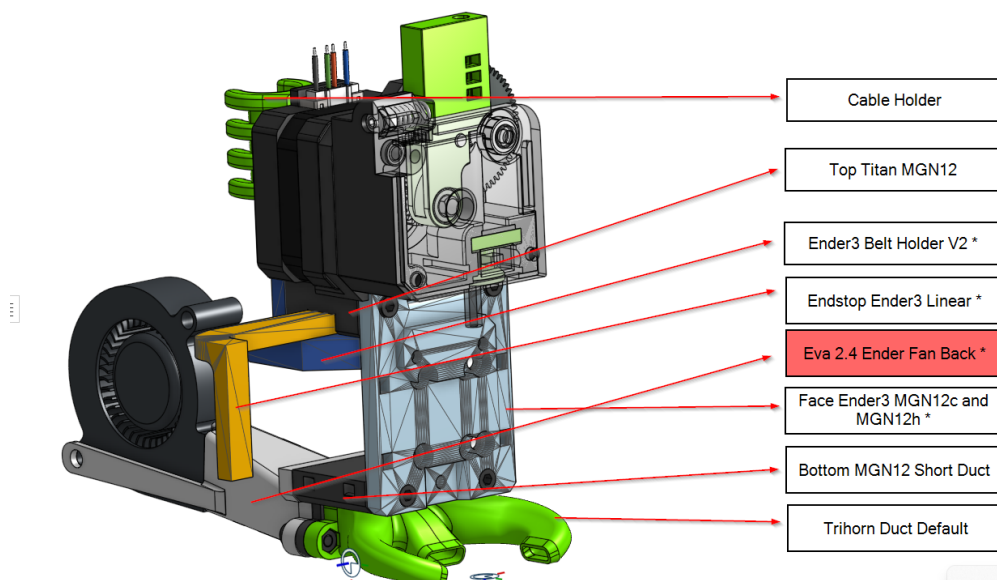
[3D Printers](#) > [Accessories](#)

Tags: [v6](#) [linear](#) [rail](#) [titan](#) [ender3](#) [mgn12h](#) [eva](#)  
[mgn12c](#)

This is using Eva2.4 because Eva3 is using a different positioning of the Linear rail that is not compatible with the Ender3. Also I had a Titan extruder and that is no longer supported in Eva3.

I wanted to use well documented and tested system for my hotend and came across the EVA configuration. Initially I wanted to use the latest version Eva3 but there is no support for the titan extruder anymore and the linear rail is at the top of the extrusion which on a ender3 it gets on the way of the X-Axis supports.

The solution was to use the Eva2.4 version which uses a front-end mounted linear rail and [sr6imp](#) had already made a version for the Eva2.3 which was a good start. However, the fan at the back did not fit as there was probably a change between Eva2.3 and Eva2.4.2.



The parts with asterisk are the parts that have been modified in order to fit Eva2.4.2 with the Ender3. I have updated the fan (highlighted in red) to fit the “Bottom MGN12 Short Duct” as it is on the Eva2.4 website.

I'm including all the parts that I printed here in case that the sources stop working however you can go to the original work done by [sr6imp](#) and to the Eva2.4.2 website.

I had a V6 ceramic clone so I also printed the holder for the V6 from the Eva2.4.2 website. I'm also including those STLs here in case that the source is no longer available.

I was not able to reuse the original belt as it was a little bit too short. I needed one just slightly longer. In order to hold the belt in place I used the GT2 Belt End clip below. You can see it in the pictures.

[GT2 belt end clip by EG\\_13 | Download free STL model | Printables.com](#)

This was remixed from Thingiverse by [sr6imp](#) (Thank you!):

[EVA2.3 carriage for Ender 3 / 3V2 / Clones with linear rail by sr6imp - Thingiverse](#)

Eva2.4.2 Website where I got the standard models: (notice this version is now discontinued but it works great for me)

[Titan - EVA \(eva-3d.page\)](#)

## This remix is based on



## EVA2.3 carriage for Ender 3 / 3V2 / Clones with linear rail

by sr6imp

### Model files



**eva24-v2-fan-ender3.stl**

---



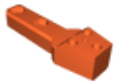
**bottom\_mgn12\_short\_duct-1.stl**

---



**cable\_holder.stl**

---



**unversal\_cable\_mount.stl**

---



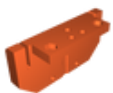
**trihorn-duct-default.stl**

---



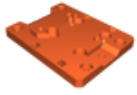
**endstop\_ender3\_linear.stl**

---



**ender3-belt-holder-v2.stl**

---



**face\_ender3\_mgn12c-mgn12h.stl**

---



**top\_titan\_mgn12.stl**

---



**v6\_support.stl**

---



**v6\_face\_clamp.stl**

---



**v6\_face.stl**

---

## License

This work is licensed under a  
[Creative Commons \(4.0 International License\)](https://creativecommons.org/licenses/by-sa/4.0/)



**Attribution-ShareAlike**

---

- ✗ | Sharing without ATTRIBUTION
- ✓ | Remix Culture allowed
- ✓ | Commercial Use
- ✓ | Free Cultural Works
- ✓ | Meets Open Definition