

Rook 2020 MK1 enclose "Mod"

 CND.CLS

[VIEW IN BROWSER](#)

updated 18. 3. 2024 | published 18. 3. 2024

Summary

Mod for enclosing the Rook 2020 MK1.

[3D Printers](#) > [Other Printer Parts & Upgrades](#)

!Please read to the end!

I'm continuing to work on upgrades for the printer. Updates will come if interest is there.

There are two doors in the front to easily get to the Buildplate. The Top panel is removable with magnets [Printing Pla or too access the Toolhead].

I reached around 60 Degrees inside (Toolhead height).

What you need besides the printed parts:

- 2020 Aluminium Extrusions (4x 90mm / 4x200mm) --> Top Frame

3x6mm Magnets:

- 4 for the Door's
- 8 for the Magnet Top Panel

Acryl glas 3mm Thick (bottom)

- 3x 170x200 [mm] clear
- 2x 100x170 [mm] clear
- 1x 170x200 [mm] black

[For the Top, open the Folder labeled “Panels”. There you find the exact Dimensions for the Top Panels to cut. Without a laser cutter it will be difficult]

Sealing Tape 3x6mm (I don't know the exact length but it's probably 2-3 meters)

Double-sided adhesive tape

[For the Door Hinges, you need some 1.75mm Filament that is cut to 25mm]

!!!Screws or other fastening materials are not specified!!!

Some helpful instructions:

Lower Frame:

The panels sit “in the frame”. The holders are glued to the panels with double-sided adhesive tape and then screwed to the frame [M3 T-Nuts].

Upper Frame:

The panels sit “on the frame”. Apply 3x6mm sealing tape wherever the panels touch the frame to create distance from the belts [minimum 3mm Seal Tape!!]. In the last photo you can see the position of the holders.

Door Hinge:

Put both printed parts together and insert a 25mm long piece of filament as an axis.

Top Panel:

The top panel is magnetically removable. The Holders consist of two parts. A lower one which is screwed into the 2020 aluminum extrusion with an M6 screw and an upper one that is glued to the panel.

Optional

New feet and skirts are included in the Optional Mods folder.

[Anti-vibration rubber feet are required for the feet (Fysetc etc.)]

In the front skirt there are optional two cutouts for two buttons (you can find mine on Aliexpress).

The back is redesigned (to look clean). I have cut outs for Ethernet adapters and power adapters (also some optional that are clean).

The Holes for the new Feet are not ideal, i know.. but that way it fit's nicely with my 3 Way Corner adapters.

Since this is my first upload here, please forgive me for any mistakes. If anyone notices something, please provide feedback to improve it ! And if someone recreates my "Mod" I would be very grateful for photos and a comment!

This remix is based on



Rook 2020 MK1

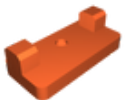
by Rolohaun Design

Model files



Enclose Mod

23 files



door-handle-holder.stl



door-handle-right.stl



door-handle-left.stl



door-hinge-holder.stl



door-hinge-panel.stl



idler_front_left.stl

idler_front_left.stp



idler_front_right.stl

idler_front_right.stp



motor-mount-left.stl

motor-mount-left.stp



motor_mount_right.stl

motor-mount-right.stp



90-degree-brace.stl

panel-backside-top.stp

top-panel.stp

panel-side-top.stp

panel-front-top.stp



corner-panel-holder-top.stl



magnet-panel-holder-2.stl



magnet-panel-holder-1.stl



panel-holder-top.stl



panel-holder-bottom.stl



Optional Mods

7 files



optional-foot.stl



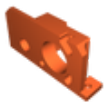
optional_side_skirt.stl



optional_front_skirt_buttons.stl



optional_foot_rear_right_clear.stl



optional_geared_z.stl



optional_power_adapter_rear.stl



optional_foot_rear_right_ethernet.stl

License ©

This work is licensed under a
[Creative Commons \(4.0 International License\)](#)



Attribution-NonCommercial

✗ | Sharing without ATTRIBUTION

- ✓ | Remix Culture allowed
- ✗ | Commercial Use
- ✗ | Free Cultural Works
- ✗ | Meets Open Definition