



## Replacement latch for Babelio Baby gate CB-M-101

 **Rusty Jones**

[VIEW IN BROWSER](#)

updated 16. 1. 2024 | published 16. 1. 2024

### Summary

Replacement latch for a a Babelio Baby gate. CB-M-101

[Household](#) > [Other House Equipment](#)

Tags: [babygate](#) [babygatelatch](#)

This is still a 'work in progress'. It is a functioning part, but I may modify/improve it in the future.

This model is for a replacement latch for a Babelio branded baby gate. It was purchased from Amazon sometime around 2020. The model number best I can determine is CB-M-101.

To print it I used PLA with 3 walls and 15% infill. But PETG or other materials may work as well.

I uploaded .step .stl & .3mf. The 3mf file is an export from Fusion 360.

Comments are welcome!

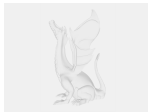
# Model files



**baby-gate-latch-v1.3mf**



**baby-gate-latch-v1.stl**



**baby-gate-latch-v1.step**

## License



This work is licensed under a  
[Creative Commons \(4.0 International License\)](https://creativecommons.org/licenses/by-nc-sa/4.0/)

**Attribution—Noncommercial—Share Alike**

- 
- ✗ | Sharing without ATTRIBUTION
  - ✓ | Remix Culture allowed
  - ✗ | Commercial Use
  - ✗ | Free Cultural Works
  - ✗ | Meets Open Definition