



Bowsette LED Crown

[VIEW IN BROWSER](#)

updated 12. 4. 2022 | published 19. 10. 2019

Summary

<https://youtu.be/WYjC-jPgky8> Use a Gemma M0 and a couple of LEDs to make this Princess Peach / Bowsette inspired crown!

[Gadgets](#) > [Other Gadgets](#)

Tags: [led](#) [mario](#) [crown](#) [princess](#) [bowsette](#)

<https://youtu.be/WYjC-jPgky8>

Use a Gemma M0 and a couple of LEDs to make this Princess Peach / Bowsette inspired crown! Use Circuit Python to fade the 10mm LEDs inside the translucent filament to illuminate this magical mushroom inspired crown. The crown is 3d printed in flexible material, making it easy for cut or sew onto fabrics, perfect for cosplay.

The Gems are 3d printed in a translucent material that allows it to fully diffuse. The horns are printed in glow in the dark flexible material, so the look spooky under black uv lights!

3D print or use an existing headband to wear for your next halloween or cosplay event! Top it off with a pair of our flexible printed horns to create a unique twist on the Bowsette crown!

Guide: <http://learn.adafruit.com/bowsette>

GEMMA M0

<https://www.adafruit.com/product/3501>

Ninjabflex Gold TPU

<https://www.adafruit.com/product/2446>

150mAh lipo battery

<https://www.adafruit.com/product/1317>

10mm LEDs

<https://www.adafruit.com/product/845>

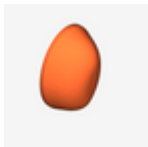
Monoprice Inventor II 3D Printer

<https://www.adafruit.com/product/3897>

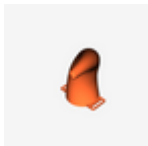
Print instructions

Licence: Creative Commons - Attribution Category: Costume

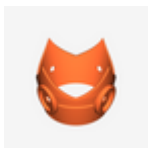
Model files



gem.stl



horn-right.stl



bowsette_led_crown.stl



150_lipo_pocket.stl



horn-left.stl

License ©

This work is licensed under a
Creative Commons (4.0 International License)



Attribution

- ✗ | Sharing without ATTRIBUTION
- ✓ | Remix Culture allowed
- ✓ | Commercial Use
- ✓ | Free Cultural Works
- ✓ | Meets Open Definition