



AlphaXL



Quadwrex

[VIEW IN BROWSER](#)

updated 28. 1. 2024 | published 28. 1. 2024

Summary

A freestyle frame meant for bashing

[Hobby & Makers](#) > [RC & Robotics](#)

Tags: [frame](#) [quadcopter](#) [drone](#) [dji](#) [freestyle](#) [fpvdrone](#) [hdzero](#) [walksnail](#)

Update* the frame is now available for purchase at cncdrones <https://www.cncdrones.com/alpha-xl.html>

Introducing the AlphaXL freestyle frame. In addition to my skelter frames, I wanted to add a couple real bashers. This frame is set up with a full camera cage, thick bottom plate, and 6mm arms.

This frame was not designed to be a light frame, but a bando basher. At 143g it may not be the lightest frame on the market, but definitely not the heaviest either.

Update* I have added a few more mounts, along with more action camera mount. Added folders to make it easier to find the right files.

specs*

- 23mm camera spacing

- 20mm and 30.5mm stack mounting
- 20mm and 25.5mm rear mounting
- 5.5" arms (note* other arm options available)
- 143g

You can find the rest of the specs in the parts diagram.

Several 3d prints to choose from. The rear was left at 20mm for compatibility with the skelter5 v2, quadmula, and any other frame with similar rear spacing.

My build*

- Skystar H7
- Foxeer reaper
- Newbeedrone Flow 2306.5 1850kv
- Walksnail V2 Pro
- Radiomaster elrs
- auw with hero 11 mini and 1300 6s 799g

cnc cutting service


- cncmadness
- armattan productions


I personally use cncmadness for all my frames. To have a frame cut, you will need to send them an email with the frame dxf files and parts list. If you choose to use one of the other arm option, make sure you attach that file and let them know as well. If you go through cncmadness, all hardware will be included.

If you have any questions, thoughts, or suggestions, feel free to ask. This frame is open source for the community.

Any future uploads, or updates will be added to the top of the page.

Model files


dxf files
11 files


alpha-xl_camera_cage.dxf



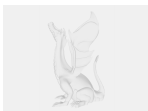
alpha_6_arm.dxf



alpha-xl_key.dxf



alpha-xl_brace_plate.dxf



alpha-xl_top.dxf



alpha-xl_arm_retainer.dxf



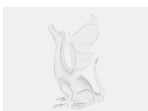
alpha_55_arm.dxf



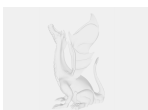
alpha-xl_cage_reinforcer.dxf



alpha_truex_51_arm.dxf



alpha-xl_bottom.dxf



alpha_51_arm.dxf



step files

11 files



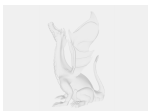
alpha-xl_cage_reinforcer.step



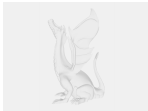
alpha_6_arm.step



alpha_55_arm.step



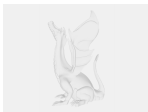
alpha-xl_brace_plate.step



alpha-xl_key.step



alpha-xl_bottom.step



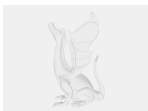
alpha-xl_top.step



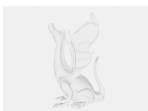
alpha-xl_camera_cage.step



alpha-xl_arm_retainer.step



alpha_truex_51_arm.step



alpha_51_arm.step



action camera mounts

9 files



action2_30.stl



session_20.stl



action2_25.stl



session_25.stl



action2_20.stl



hero_mini_30.stl



hero_mini_25.stl



session_30.stl



hero_mini_20.stl



front_bumper.stl



19mm_cam_tpu.stl



20mm_cam_tpu.stl



arm_skids.stl



nano_cam.stl



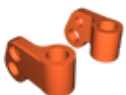
front_bumper_elrs.stl



ws_v2_dual_antenna.stl



tpu_arm_bumper.stl



short_gps_base.stl



v2_sma.stl



220_gps_rear.stl



15_antenna_ring.stl



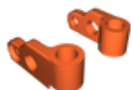
4_antenna_ring.stl



dual_universal_4.stl



v2_universal_antenna_15.stl



mid_gps_base.stl



s_ws_v2.stl



v2_universal_antenna_4mm.stl



axii_mount.stl



v2_minion_mount.stl



rm_mount.stl



v2_betafpv_elrs.stl

License

This work is licensed under a
[Creative Commons \(4.0 International License\)](#)



Attribution-ShareAlike

-
- ✗ | Sharing without ATTRIBUTION
 - ✓ | Remix Culture allowed
 - ✓ | Commercial Use
 - ✓ | Free Cultural Works
 - ✓ | Meets Open Definition