



Chainmail (just another)



UliLac

[VIEW IN BROWSER](#)

updated 16. 1. 2024 | published 16. 1. 2024

Summary

A simple and sturdy chainmail

[Household](#) > [Home Decor](#)

Tags: [chainmail](#)

My take on the chainmail topic.

Makes a quite stretchy and extremely flexible printable fabric, nice for coasters, jewellery, decoration ...

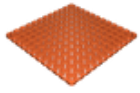
What makes it different?, well ... first, it is a veeery simple basic shape (just a square); then, there's dedicated corners and borders - most chainmails, when printed into decorative objects, have "open" and jagged sides. This one has dedicated border links that make it look just ... better when placed anywhere. And it has convenient ample tolerances.

Provided is a 100x100mm coaster, a regular chainmail element (that makes up the majority of the mesh) as well as two border links - one each for upper/lower and left/right sides of your mesh. Plus corner pieces ... 4 needed, two need to be flipped to make the pattern match.

To create a mesh in PrusaSlicer (or Tinkercad, or whatever), load a piece, then copy it and move by 8.4cm over the diagonal to make it link. Rinse and repeat until you arrive at your desired pattern.

Plus, of course, .step files for each piece for all your tinkering needs.

Model files



chainmailcoaster10x10cm.stl



chainmailregularlink.stl



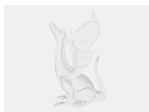
chainmailbordera.stl



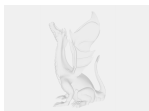
chainmailborderb.stl



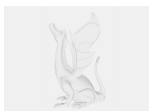
chainmailcorner.stl



chainmailregularlink.step



chainmailbordera.step



chainmailborderb.step



chainmailcorner.step

License

This work is licensed under a
Creative Commons (4.0 International License)



Attribution-ShareAlike

- ✗ | Sharing without ATTRIBUTION
- ✓ | Remix Culture allowed
- ✓ | Commercial Use
- ✓ | Free Cultural Works
- ✓ | Meets Open Definition