



## Corner Clamp

 **GV - Maryland**

[VIEW IN BROWSER](#)

updated 16. 1. 2024 | published 16. 1. 2024

## Summary

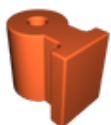
This is a corner clamp to ensure cabinets are built square. It is especially useful as a woodworking tool.

[Hobby & Makers](#) > [Tools](#)

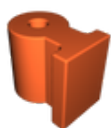
Tags: [tool](#) [woodworking](#) [clamp](#)

Corner clamp for cabinetry designed in Fusion 360. The F3D files are partly parametric if you need to adjust the model. The present design is for a 3/8 inch diameter bolt. I purchased U-Bolts and cut them in half. The bolts in the knob are press fit and can be placed by compressing with two bolts as shown in the attached images. The parts were all printed with Prusament PETG at 30% infill. I used a layer height of 0.15mm for the knob and 0.2mm for the other parts.

## Model files



**corner-clamp-foot-v3.stl**



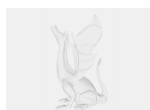
**corner-clamp-foot-v3.3mf**

---



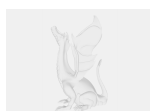
**corner-clamp-knob-v2.stl**

---



**corner-clamp-l-v4.f3d**

---



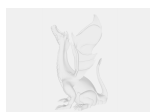
**corner-clamp-foot-v2.f3d**

---



**corner-clamp-knob-v2.3mf**

---



**corner-clamp-knob-v2.f3d**

---



**corner-clamp-l-v4.3mf**

---



**corner-clamp-l-v4.stl**

---

## License ©

This work is licensed under a  
[Creative Commons \(International License\)](#)

**Public Domain**

---



- ✓ | Sharing without ATTRIBUTION
- ✓ | Remix Culture allowed
- ✓ | Commercial Use
- ✓ | Free Cultural Works
- ✓ | Meets Open Definition