



Webcam Mount for Desktop Monitor



Dylan Auty

[VIEW IN BROWSER](#)

updated 16. 1. 2024 | published 16. 1. 2024

Summary

A simple webcam mount which attaches to the side of a monitor, clearing up desk space, and at eye height!

[Gadgets](#) > [Photo & Video](#)

Tags: [camera](#) [mount](#) [cameramount](#) [webcam](#) [monitor](#)
[webcammount](#) [twitch](#) [stream](#) [webcamholder](#)

A streamer I know needed a mount for their webcam that would do two things, free up desk space, and bring the camera down and at an angle so that the view wasn't above the screen height.

I came up with this simple mount idea which has a small ledge all around and mounts to the right (top) corner of the monitor. It works great, but that wasn't always the case. The mount is technically in its 3rd version. We ran into some issues with deforming from the weight and a weak corner join. Earlier versions also were tricky to print without supports.

In this version, which I now believe should be ready to share is easy to print without supports, after a good 6 months it hasn't deformed much, if at all, and seems to handle the weight of the webcam quite well.

This version also is slightly adjustable in that you can move the camera forward or backward as and because that arm extends slightly, you should be able to rotate the camera a bit as well.

If it's better for you to mount to the left side of the screen, a simple flip along that axis should do the trick.

What you need

- Double-sided tape: Yes, it **does need** some tape to stay in place. I couldn't come up with a better way of making it fit "most" screens without the bit of tape, so your mileage may vary a bit
- 1/4 inch mounting screw: I borrowed one off a cheap little desk tripod I had laying around, it works great.

Dimensions

- Depth: 22.5mm (Approx. thickness of the monitor I designed for)
- Height: 190mm
- Width: 111mm

Print Settings:

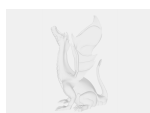
- Supports: None
- Infill: 25% (Adaptive Cubin)
- Layer Height: 0.2mm
- Printer: Anet AM8

Final Notes:

I'd recommend you take a few measurements just to make sure it will fit in your space, and that your monitor is a good fit for it. I did my best to make sure it is designed in a way where it should work alright in most situations!

Of course, step files are included so you can adjust them as you need!

Model files



webcammountv3.step



webcammountv3.stl

License ©

This work is licensed under a
Creative Commons (4.0 International License)



Attribution

- ✗ | Sharing without ATTRIBUTION
- ✓ | Remix Culture allowed
- ✓ | Commercial Use
- ✓ | Free Cultural Works
- ✓ | Meets Open Definition