



TCL Remote Holder - M8 countersink



Christopher Johns

[VIEW IN BROWSER](#)

updated 20. 1. 2024 | published 20. 1. 2024

Summary

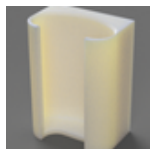
TCL remote holder. Remixed to use with leftover M8 screws and T-nuts from my race arcade rig.

[3D Printers](#) > [Accessories](#)

Tags: [remote](#) [tcl](#) [trakracer](#)

Printing with standard settings and no support worked well for me. M8 is a rather large mounting screw for this but standard for the rig.

This remix is based on



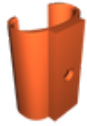
Roku (TCL) Remote Holder

by jlips

Model files



tcl-remote-holder-m8-countersink.f3d



tcl-remote-holder-m8-countersink.stl

License ©

This work is licensed under a
[Creative Commons \(4.0 International License\)](#)



Attribution-NonCommercial

-
- ✗ | Sharing without ATTRIBUTION
 - ✓ | Remix Culture allowed
 - ✗ | Commercial Use
 - ✗ | Free Cultural Works
 - ✗ | Meets Open Definition