



5 Photo Litophane Box - 140x140mm



Robin Hielscher

[VIEW IN BROWSER](#)

updated 16. 1. 2024 | published 16. 1. 2024

Summary

Give your photos another look. Print them as a litophane and add them to the box. Photos can be easily switched.

[Art & Design](#) > [Other Art & Designs](#)

Tags: [light](#) [lamp](#) [photography](#) [photoframe](#) [litophane](#)
[nightlamp](#) [litophaneholder](#) [litophanenightlamp](#)

I wanted a box with a clean look that presents the litophane prints nicely by giving them a backlight. The box could also be used as a nightlight. One side has a round indentation to feed a cable through. In the pictures you see me using a ESP32 Pico from Adafruit with a Neopixel Jewel connected to it and running WLED.

The Litophanes can be created at [Litophanemaker . com](#) or a similar site. (I am not affiliated)

Use these settings:

Flat Litophane

Frame Options: Frame Only

Width (mm): 120

Height (mm): 119

Depth (mm): 7.5

Base Height (mm): 5

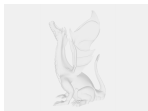
Maximum Thickness and Minimum Thickness can be tweaked, I used default with good results. Keep it below 7.5 mm.

You can print 5 Litophanes or use blank plates for the back or even more sides.

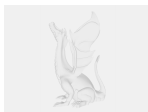
Attach a light to the bottom, feed the power cable through the indentation. Insert the 4 side panels into the top. Attach the top to the bottom and add the last litophane or leave the top open.

If you want to switch the photos later on. Just print new photos, lift the top and switch them out.

Model files



litophane_box_v1.f3d



litophane_box_v1_blank_plate.f3d



litophane_box_v1_top.stl



litophane_box_v1_bottom.stl



litophane_box_v1_blank_plate.stl

License

This work is licensed under a
Creative Commons (4.0 International License)



Attribution-NonCommercial

- ✗ | Sharing without ATTRIBUTION
- ✓ | Remix Culture allowed
- ✗ | Commercial Use
- ✗ | Free Cultural Works
- ✗ | Meets Open Definition