



## Skadis pegboard paintbrush holder (t-nut mounting)



Mikhail Gordin

[VIEW IN BROWSER](#)

updated 17. 1. 2024 | published 17. 1. 2024

### Summary

Paintbrush holder for Ikea Skadis pegboard using the t-nut mounting system

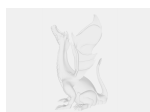
[Hobby & Makers](#) > [Organizers](#)

Tags: [skadistnut](#)

Paintbrush holder for Ikea Skadis pegboard using the [t-nut mounting system](#). See that link for how to use t-nuts. This is the same basic design concept as [Skadis Paintbrush holder \(easy print\)](#) by [roofuskit](#), but using t-nuts (and I assume we may have picked different sizing).

This uses M2.5 12mm screws.

### Model files



[paintbrush-holder-t-nut.step](#)

# License

This work is licensed under a  
**Creative Commons (4.0 International License)**



**Attribution-ShareAlike**

---

- ✗ | Sharing without ATTRIBUTION
- ✓ | Remix Culture allowed
- ✓ | Commercial Use
- ✓ | Free Cultural Works
- ✓ | Meets Open Definition