

Modular Board Game System

P Pryn Works

[VIEW IN BROWSER](#)

updated 28. 7. 2021 | published 28. 7. 2021

Summary

This is a fully customizable board game system equipped with dice tower and game tiles.

[Toys & Games](#) > [Board Games](#)

This is a fully customizable and fully 3D printable board game system equipped with dice tower and game tiles. The game tiles are unique in the sense that board state is repositionable in any grid format. Meaning players are free to create any epic dungeons or battlefields to their heart's content.

The game tile features a dial that counts up to 6 that allows for a dynamic board state. The dial wheel is held in position by a detent which has a very satisfying "click" when rotated. The game tiles are held together via magnets (diameter 6mm x thickness 1.35mm). They are assembled to the underside of the main frame through press fits.

The dice tower also sits on top of the main frame (without the top plate) and can accommodate normal sized D6s and is repositionable anywhere in the grid. For better esthetics, it is recommended the dice tower to be printed out of transparent material. We use PETG for this entire project

Pole detector app link

<https://play.google.com/store/apps/details?id=air.de.supermagnete.magnetapp&hl=en&gl=US>

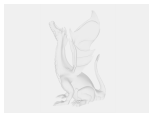
Model files



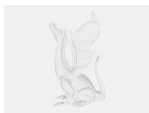
2021-07-28_mainframe_final.amf



2021-07-28_dicetower_final.amf



2021-07-28_topplate_final.amf



2021-07-28_dialwheel_final.amf

License ©

This work is licensed under a
[Creative Commons \(4.0 International License\)](#)



Attribution—Noncommercial—No Derivatives

- ✗ | Sharing without ATTRIBUTION
- ✗ | Remix Culture allowed
- ✗ | Commercial Use
- ✗ | Free Cultural Works
- ✗ | Meets Open Definition