

Kenlin Rite-trak II Case Runner and Roller (Redesign)



zzzy

[VIEW IN BROWSER](#)

updated 22. 1. 2024 | published 22. 1. 2024

Summary

About: Updated Jan 2024: -Complete redesign of u:CFinke's Kenlin Rite Track-Compatible Case Runner to make room for...

[Household](#) > [Other House Equipment](#)

Tags: [thingiverse](#)

About:

Updated Jan 2024:

-Complete redesign of u:CFinke's Kenlin **Rite Track-Compatible** Case Runner to make room for the Rite-trak II Roller and to reinforce the side wings' connection to the main body.

-Two-part roller that's compatible with the runner, just snap them together using pieces of 1.75mm filament as shown in the pics.

FreeCAD source files included.

Works well with Drawer Guide by rickvillela: <https://www.thingiverse.com/thing:3176929>

Print Settings

Printer:

Sovol SV01

Rafts:

No

Supports:

Yes

Resolution:

0.2

Infill:

33.3333%

Filament:

any ABS, PLA+/PLA Max, PETG

any

Notes:

Tree supports work best.

Category: Replacement Parts

Model files



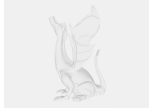
runner-rebuild-body.stl



half_roll-body.stl



runner-rebuild.fcstd



half_roll.fcstd

[Find source .stl files on Thingiverse.com](#)

License

This work is licensed under a
Creative Commons (4.0 International License)



Attribution

-
- ✗ | Sharing without ATTRIBUTION
 - ✓ | Remix Culture allowed
 - ✓ | Commercial Use
 - ✓ | Free Cultural Works
 - ✓ | Meets Open Definition