



Cheese/Tofu Press



Schaffer.la

[VIEW IN BROWSER](#)

updated 16. 1. 2024 | published 16. 1. 2024

Summary

A rugged, easy-to-use, press for homemade Cheese and Tofu



27.21 hrs



7 pcs



0.30 mm



0.40 mm



PET



506 g



Prusa
MK3/S/S+

[Household](#) > [Kitchen](#)

Tags: [cooking](#) [cheesemaking](#)

Printed in PET-G. done mostly at 0.3 layer height with 70% (or better) infill for strength. Supports needed for the outside box, sieve and press (organics work well).

Assembly is as shown in the photos. Take care putting in the 4 pegs into the sieve as these are a tight fit (I ran a 3/16 drill bit through the holes to ease this assembly).

The screw is a bit tight as I wanted very little play. A few turns of the screw back and forth in the nut works out the roughness.

To Assemble:

Insert the Nut into the recess in the ScrewFrame (make sure it inserts completely),

insert the screw into the nut.

Insert the 4 pegs into the the sieve (one on each bottom corner),

place the sieve in the outside box,

place the cheese / Tofu in the sieve,

place the pusher on top of the cheese/Tofu,

place the spreader in the recess in the pusher

pull the screw clamp onto the entire assembly fastening it to the nubs on the short side of the outside box.

Tighten the screw, pressing the cheese/Tofu to the desired amount. Whey can be poured off by tipping the entire assembly over the sink.

(I note here that the reason the spreader is not part of the pusher is because the screw/nut/frame can be eliminated by using rubber bands that attach to the nubs on the outside box and the nubs on the inside of the pusher. This alternative may be preferred)

Model files



tofupress-partspreader.stl



tofupress-partoutsidebox.stl



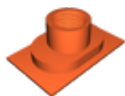
tofupress-partpeg.stl



tofupress-partpress.stl



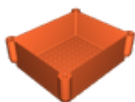
tofupress-partscrewframe.stl



tofupress-partnut.stl



tofupress-partscrew.stl



tofupress-partsieve.stl

Print files



tofupress-partspreader_03mm_petg_mk3s_1h37m.gcode

⚙ PET ⚙ 0.40 mm ⚙ 0.30 mm ⌚ 1.62 hrs ⚖ 31 g 🖨 Prusa MK3/S/S+



tofupress-partpeg_03mm_petg_mk3s_1h5m.gcode

⚙ PET ⚙ 0.40 mm ⚙ 0.30 mm ⌚ 1.08 hrs ⚖ 14 g 🖨 Prusa MK3/S/S+



tofupress-partoutsidebox_03mm_petg_mk3s_5h32m.gcode

⚙ PET ⚙ 0.40 mm ⚙ 0.30 mm ⌚ 5.54 hrs ⚖ 119 g 🖨 Prusa MK3/S/S+



tofupress-screwnut_03mm_petg_mk3s_2h29m.gcode

PET 0.40 mm 0.30 mm 2.49 hrs 50 g Prusa MK3/S/S+



tofupress-partscrewframe_03mm_petg_mk3s_4h57m.gcode

PET 0.40 mm 0.30 mm 4.95 hrs 103 g Prusa MK3/S/S+



tofupress-partsieve_03mm_petg_mk3s_4h37m.gcode

PET 0.40 mm 0.30 mm 4.62 hrs 78 g Prusa MK3/S/S+



tofupress-partpress_03mm_petg_mk3s_6h54m.gcode

PET 0.40 mm 0.30 mm 6.91 hrs 110 g Prusa MK3/S/S+

License

This work is licensed under a
Creative Commons (4.0 International License)



Attribution—Noncommercial—No Derivatives

- ✗ | Sharing without ATTRIBUTION
- ✗ | Remix Culture allowed
- ✗ | Commercial Use
- ✗ | Free Cultural Works
- ✗ | Meets Open Definition