



EVA 3 single 5015 fan inlet for a toolboard

 mmackowiak

[VIEW IN BROWSER](#)

updated 20. 1. 2024 | published 20. 1. 2024

Summary

Single 5015 fan inlet that is angled for use with a toolboard.

[3D Printers](#) > [Other Printer Parts & Upgrades](#)

Tags: [fan](#) [5015](#) [eva](#) [eva3](#) [eva3mods](#) [toolboard](#)

Single 5015 fan inlet for EVA 3 with a slight angle for use with a toolboard. Heavily inspired by [very similar model](#), but it was designed for a slightly different fan and didn't have source files. It's not necessary, but I recommend using M3 heat insert on top of the arm where fan is screwed to the mount.

Also big thanks to the author of [5015 fan model](#).

Attaching source files in case anyone needs to change model.

This remix is based on



EVA 3 - Modular 3D Printer carriage platform

by McAbra



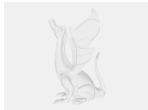
5015 Radial Fan - 3D model for conception - .step & .stl files

by Waikikiprod

Model files



eva3-5015-fan-inlet.stl



eva3-5015-fan-inlet.step



eva3-5015-fan-inlet.f3d

License ©

This work is licensed under a
[Creative Commons \(4.0 International License\)](#)



Attribution—Noncommercial—Share Alike

- ✗ | Sharing without ATTRIBUTION
- ✓ | Remix Culture allowed
- ✗ | Commercial Use
- ✗ | Free Cultural Works
- ✗ | Meets Open Definition

