



Puzzle Box / Block Puzzle



Extrutim

[VIEW IN BROWSER](#)

updated 13. 8. 2022 | published 13. 8. 2022

Summary

Can you fit all stones in the box?



24.94 hrs



1 pcs



0.20 mm



0.40 mm



PLA



286 g



Prusa
MK3/S/S+

[Toys & Games](#) > [Puzzles & Brain-teasers](#)

Tags: [3dc](#) [box](#) [brain](#) [brainteaser](#) [cave](#) [christmas](#)
[game](#) [green](#) [present](#) [puzzle](#) [puzzlebox](#) [riddle](#) [stone](#)
[teaser](#) [the](#) [3dcave](#) [extrutim](#)

The goal of the puzzle is to get all the pieces into the box. It works, even if it doesn't look like it at first!

This is the third version of my puzzle game, inspired by an old wooden puzzle.

Since puzzles like this sit on a shelf most of the time, a nice design that arouses interest is important. I hope you like it as much as I do.

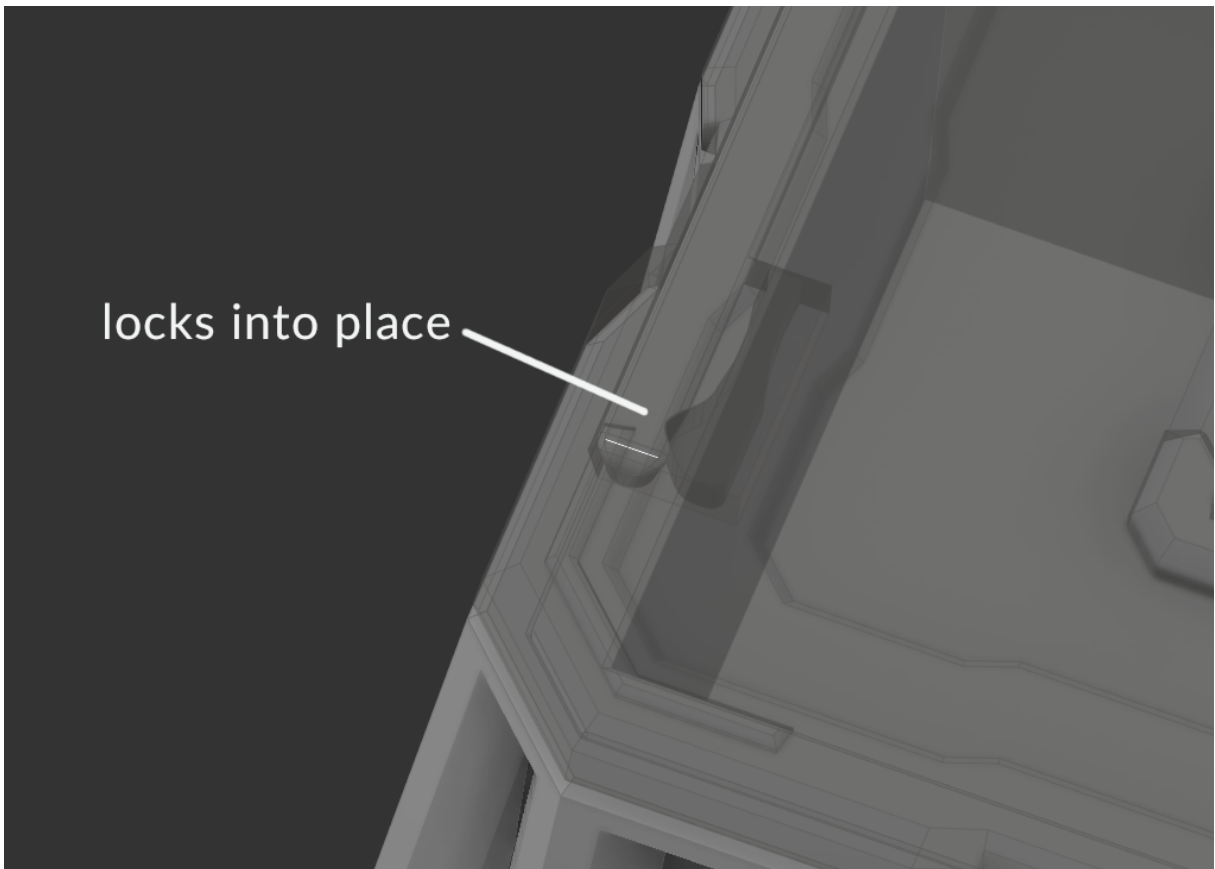
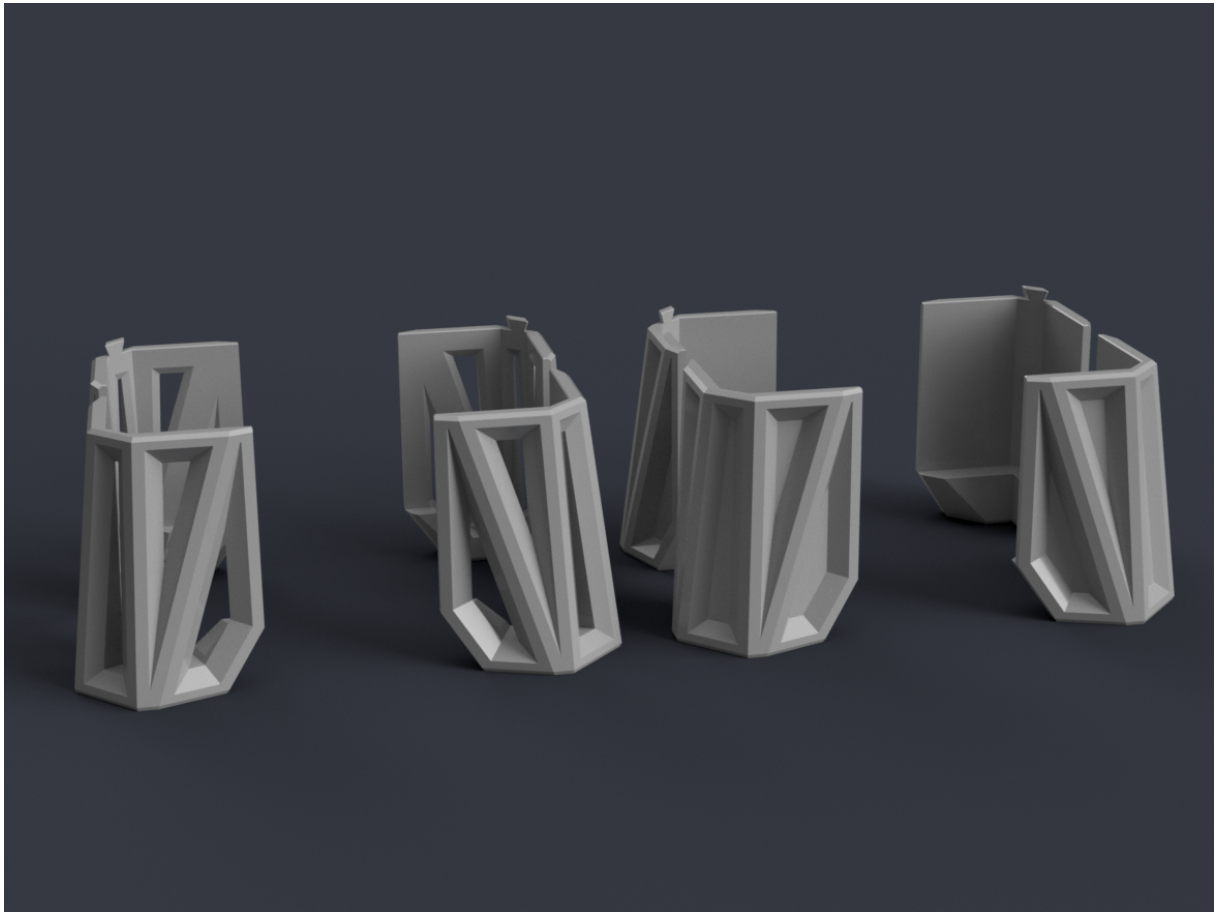
You can choose from two different legs, these are then simply glued with a little superglue. Just add a break/color change before closing the chamber. In the lid and the stone is a cavity in which a **15x2mm magnet** fits. This

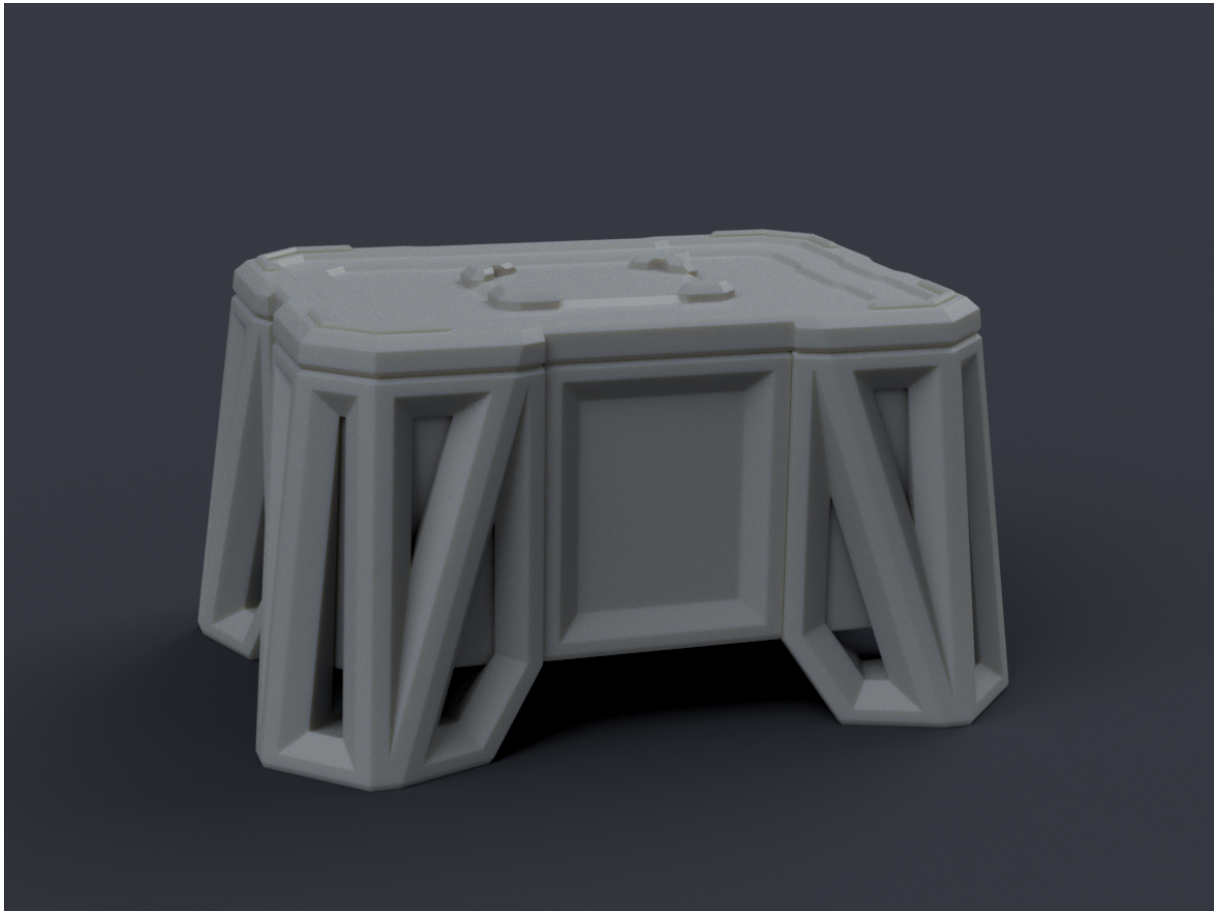
is not a must, but helps that the stone won't get lost. The filament change for two-color printing must be set at a height of **6.2mm**.

The lid snaps into place so that this also sits firmly.

All parts are printable **without supports!**

If you like check out [my other designs](#) too!





Info for printing:

I recommend using a matt filament and 0,15mm layer height for a qualitative look.

Model files

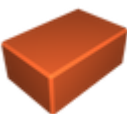


Stones and Box

4 files



boxv3.stl



thestone.stl

☐ ad a pause or colorchange to insert a magnet



stones-1.stl



stones-2.stl



Lids

2 files



lidv3elevated.stl

☐ add a pause or colorchange to insert a magnet



lidv3flat.stl



Legs

2 files



legs.stl



legsfilled.stl

Print files



print-time-info.gcode

⚙️ PLA ⚙️ 0.40 mm ⚙️ 0.20 mm ⌚ 24.94 hrs ⚖️ 286 g 🖨️ Prusa MK3/S/S+

📄 Don't print! Just an Info for time and Material consumption

License ©



This work is licensed under a
[Creative Commons \(4.0 International License\)](#)

Attribution—Noncommercial—No Derivatives

-
- ✖ | Sharing without ATTRIBUTION
 - ✖ | Remix Culture allowed
 - ✖ | Commercial Use
 - ✖ | Free Cultural Works
 - ✖ | Meets Open Definition