

3D MODEL ONLY



Geometric Low Poly Blastoise

**Phaseworks3D**[VIEW IN BROWSER](#)

updated 16. 1. 2024 | published 16. 1. 2024

Summary

2.5D display art of the Pokémon Blastoise, designed in a low poly geometric style. Stand included.

[Art & Design](#) > [Sculptures](#)

Tags: [display](#) [pokemon](#) [squirtle](#) [gameboy](#) [nintendo](#) [low poly](#) [decor](#) [art](#) [geek](#) [geometric](#) [nerd](#) [gift](#) [starter](#) [abstract](#) [blastoise](#) [collectible](#) [decorative](#) [nostalgia](#) [contemporary](#) [line](#)

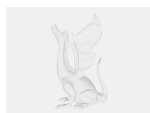
If you download the model, please don't forget to leave a like. Thank you! <3

Bring to life the mighty Blastoise with this low poly geometric 3D print. This unique design showcases the formidable Pokémon in sharp, angular lines, offering a modern, minimalist take. Perfect for Pokémon fans and art enthusiasts, download this file for a stylish addition to your collection

To reduce the risk of stringing, I recommend you reduce your outer wall speed to 100mm/s, this has given me consistently clean results without the need to modify other settings.

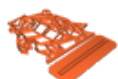
For best surface I recommend printing the display side face down on a textured PEI bed.

Model files



blastoise.3mf

📄 Bambu Studio 3MF



blastoise.stl

📄 STL File

License ©

This work is licensed under a
[Creative Commons \(4.0 International License\)](#)



Attribution—Noncommercial—No Derivatives

-
- ✗ | Sharing without ATTRIBUTION
 - ✗ | Remix Culture allowed
 - ✗ | Commercial Use
 - ✗ | Free Cultural Works
 - ✗ | Meets Open Definition