

# ComMarker Laser Bed Fences | Guides



RedBeardOps

[VIEW IN BROWSER](#)

updated 19. 1. 2024 | published 19. 1. 2024

## Summary

These are fences for the ComMarker B4 2W Laser Engraver

[Hobby & Makers](#) > [Tools](#)

Tags: [laser](#) [guides](#) [alignment](#) [commarker](#) [fencecs](#)

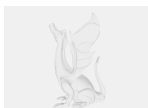
I didn't like the fences that came with the machine so I made these as replacements! Also I added a 90 degree fence for quick alignment on the bed.

Video showcasing the model:

## Model files



[commarkerb4-straight-fence.stl](#)



[commarkerb4-90degree-fence.step](#)



**commarkerb4-90degree-fence.3mf**

---



**commarkerb4-90degree-fence.f3d**

---



**commarkerb4-straight-fence.f3d**

---



**commarkerb4-straight-fence.3mf**

## License

This work is licensed under a  
**Creative Commons (4.0 International License)**



### **Attribution**

---

- ✗ | Sharing without ATTRIBUTION
- ✓ | Remix Culture allowed
- ✓ | Commercial Use
- ✓ | Free Cultural Works
- ✓ | Meets Open Definition