



End stop holder for Creality CR-10S/ Ender 3/Ender5/CR



Wilson Kong

[VIEW IN BROWSER](#)

updated 17. 1. 2024 | published 17. 1. 2024

Summary

The end stop holder was broken so I designed a replica.

[3D Printers](#) > [Creality Parts & Upgrades](#)

Tags: [replacement](#) [creality](#) [crealitycr10](#) [endstop](#)
[crealityender3](#) [crealityender5](#)

The end stop holder was broken so I designed a replica.

Printed with 0.28mm resolution for higher strength.

I used the screws that held the switch in place to tap the 3D printed part.
Worked well.

Print Settings

Rafts: No

Supports: No

Layer height: 0.2

Infill: 50

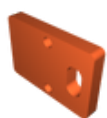
Filament brand: 3dfillies

Filament material: PLA

From my thingiverse profile:

<https://www.thingiverse.com/thing:4498630>

Model files



end_stop_holder_v1.stl

License ©



This work is licensed under a
[Creative Commons \(4.0 International License\)](https://creativecommons.org/licenses/by/4.0/)

Attribution

-
- ✖ | Sharing without ATTRIBUTION
 - ✓ | Remix Culture allowed
 - ✓ | Commercial Use
 - ✓ | Free Cultural Works
 - ✓ | Meets Open Definition