



Multiboard alternative mount (WIP)- Tape measure holder

N NigelTufnel

[VIEW IN BROWSER](#)

updated 17. 1. 2024 | published 17. 1. 2024

Summary

WIP - working on an alternative multiboard mount option that is strong and easy to print with no supports.

[Household](#) > [Garage](#)

Tags: [multiboard](#)

Strongly inspired by the mounting system developed by KYZ Designs for the Honeycomb storage wall.

I found trying to figure out which mount would be best for remixing hard, and loved the KYZ options for my HSW stuff, so figured I'd try to do the same for the multiboard.

Basically the mount should just press right in. But it might come out if too much down or side force is applied. So add the locking pin to hold it in there tight. At least with my print settings it is held in super tight, but might differ depending on your tolerances.

As an initial test I have made a tape measure holder (it's one of the first things in the HSW tiles i'm replacing with multiboard. But I will add more if

this works better than the remix option that multiboard are putting out 'soon'.

This remix is based on



HSW Ez-H Series Tool Holders - Honeycomb Storage Wall

by KYZ Design



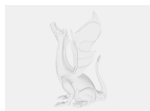
Multiboard

Model files

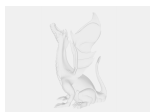


Mount step files

2 files



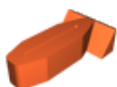
alternative-mount-v1.step



locking-pin.step



multiboard-tape-measure-alternate-mount.stl



locking-pin.stl

☐ To add strength and lock it in.

License

This work is licensed under a
Creative Commons (4.0 International License)



Attribution-NonCommercial

- ✗ | Sharing without ATTRIBUTION
- ✓ | Remix Culture allowed
- ✗ | Commercial Use
- ✗ | Free Cultural Works
- ✗ | Meets Open Definition