



ElectroCookie small PCB box for WLED with vents and optional flanges



Dennis M

[VIEW IN BROWSER](#)

updated 28. 1. 2024 | published 28. 1. 2024

Summary

Remixed the original and added flanges for mounting, along with vents for cooling and made it longer.

[Household](#) > [Home Decor](#)

Remixed the original and added flanges for mounting, along with vents for cooling and made it longer to help accommodate wiring and Wago connectors.

Also made the lid's snaps a little thicker as I've broken a few over time.

It's longer and taller to accommodate wiring and for space for my ESP setup, where I install the board on to header pins that get soldered to the PCB.

I'm working on a snap lid that uses magnets instead and I'll upload that here as well when it's done.

This remix is based on



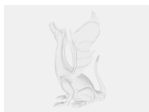
Case for ElectroCookie Mini PCB Prototype Board

by DorffMeister

Model files



small_box_lid_stronger_vents.blend



small_pcb_box_lid_stronger.blend



small_pcb_box.blend



small_pcb_box_w_flanges.blend

License

This work is licensed under a
Creative Commons (4.0 International License)



Attribution-NonCommercial

-
- ✗ | Sharing without ATTRIBUTION
 - ✓ | Remix Culture allowed
 - ✗ | Commercial Use
 - ✗ | Free Cultural Works
 - ✗ | Meets Open Definition