



Rancher by 3DSets - 3542 Motor mount for belted gearbox



SejnyM

[VIEW IN BROWSER](#)

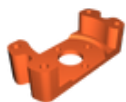
updated 28. 1. 2024 | published 28. 1. 2024

Summary

Tested with Kavan C3542 motor and fit perfect. Need longer screws for installation to gearbox(4x M3x20(25)).

[Hobby & Makers](#) > [RC & Robotics](#)

Model files



motor-mount.3mf



motor-mount.stl

License

This work is licensed under a
Creative Commons (International License)



Public Domain

- ✓ | Sharing without ATTRIBUTION
- ✓ | Remix Culture allowed
- ✓ | Commercial Use
- ✓ | Free Cultural Works
- ✓ | Meets Open Definition