

# Atlanta Georgia 3D Miniature



jarvizar

[VIEW IN BROWSER](#)

updated 4. 3. 2024 | published 4. 3. 2024

## Summary

3D Miniature of Atlanta GA created with OSM data

[World & Scans](#) > [Architecture & Urbanism](#)

Tags: [frame](#) [mini](#) [landscape](#) [terrain](#) [miniature](#) [architecture](#) [stadium](#) [city](#) [mercedes](#) [usa](#) [ga](#) [geography](#) [benz](#) [united](#) [georgia](#) [atlanta](#) [fc](#) [cityscape](#) [falcons](#)

3d miniature of Atlanta, Georgia!

Model created in Blender using the [Blosm](#) addon.

Check out my collection of other miniature cities: [https://www.printables.com/@jarvisar\\_1334825/collections/1124416](https://www.printables.com/@jarvisar_1334825/collections/1124416)

## Slicing & Printing Details

This model was designed to be printed with a 0.4mm nozzle and 0.16mm layer heights.

Try using a 0.2mm nozzle (0.08mm layer heights) or scaling up for even finer detail!

**Note:** If roads or smaller details disappear after slicing, try lowering the extrusion/line width of external perimeters (outer walls) closer to 0.4mm OR **use Arachne walls**. Can also try enabling “Detect Thin Walls”.

Feel free to reach out if you run into any other issues!

### Framing Details

This model measures almost exactly **6.7in by 4.7in** (170.5mm X 119.5mm) and should fit most 5x7 frames (assuming frame lip/overlap is around a quarter inch). Feel free to change the scale/size of the model(s) to meet your needs.

Personally I use these cheap frames from Amazon: <https://www.amazon.com/dp/B0C8HY7YSQ>

And blue printer paper: <https://www.amazon.com/dp/B00006IDQT>

I also included a **fully printable frame** (including a 1mm thick water plate) designed to fit all my miniatures.

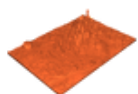


A frame is not required! This model looks great by itself and can be displayed almost anywhere.

See my [Patreon](#) for a commercial license, early downloads, polls towards future models, and more!

[Buy me a coffee :\)](#)

## Model files



### **atlanta.stl**

☐ 0.16mm layer height



### **frame-v2.stl**

☐ optional



### **water-v2.stl**

☐ optional



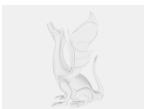
### **atlanta-ga-label.stl**

☐ optional; 1 color change for the text



### **atlanta-label.stl**

☐ optional; 1 color change for the text



### **atlanta-v2.3mf**

☐ bambu studio 3mf

# License

This work is licensed under a  
**Creative Commons (4.0 International License)**



## **Attribution-NonCommercial**

---

- ✗ | Sharing without ATTRIBUTION
- ✓ | Remix Culture allowed
- ✗ | Commercial Use
- ✗ | Free Cultural Works
- ✗ | Meets Open Definition