



PiDP-11 Stand

M MikeF

[VIEW IN BROWSER](#)

updated 12. 4. 2022 | published 24. 12. 2021

Summary

Stand for the PiDP-11 to use in place of the wood block. It screws in using two of the back panel screws. Print 2 of...

[Gadgets](#) > [Computers](#)

Tags: [raspberrypi](#) [pidp11](#)

Stand for the PiDP-11 to use in place of the wood block. It screws in using two of the back panel screws. Print 2 of this shape for a single PiDP-11. Use supports for the screw slot, and pretty much any filament type.

Included is my FreeCAD file, as well.

Print Settings

Printer Brand:

Prusa

Printer:

Prusa Mk2

Rafts:

No

Supports:

Yes

Resolution:

.2mm

Infill:

20%, 3 perimeters

Filament:

Filamentum CPE HG100 Natural

Notes:

I printed this with CPE because that was the best color choice I had on hand, I'd have normally printed this in PLA.

I used supports for the screw slot. Category: Computer

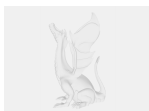
Model files



pidp11stand.stl



pidp11stand.amf



pidp11stand.fcstd

[Find source .stl files on Thingiverse.com](#)

License ©

This work is licensed under a
Creative Commons (4.0 International License)



Attribution

- ✗ | Sharing without ATTRIBUTION
- ✓ | Remix Culture allowed
- ✓ | Commercial Use
- ✓ | Free Cultural Works
- ✓ | Meets Open Definition