

Spool Holder Fully Supported



atltvhead

[VIEW IN BROWSER](#)

updated 28. 1. 2024 | published 28. 1. 2024

Summary

Spool Holder Based on Shawn's Spool Holder

[3D Printers](#) > [Accessories](#)

Tags: [spool](#) [spoolholder](#)

EDIT

The current files are improved over the oldVersion by included keyed channels which lock the liftable spoolBase into the main support Base.

This remix is based on



Spool Holder

by Shawn

Model files

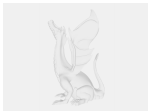


currentVersion

5 files



spoolroller.3mf



spoolremix.f3d



base.3mf



spoolremix.step



spoolbase.3mf



oldVersion - Not Recommended

4 files



rollerholderv2.3mf



spoolroller.3mf



holderv2.3mf



spoolremix.f3d

License

This work is licensed under a
Creative Commons (4.0 International License)



Attribution—Noncommercial—Share Alike

-
- ✗ | Sharing without ATTRIBUTION
 - ✓ | Remix Culture allowed
 - ✗ | Commercial Use
 - ✗ | Free Cultural Works
 - ✗ | Meets Open Definition