



Tefifon Replacement Part: Drive Pulley Cap



mageb

[VIEW IN BROWSER](#)

updated 30. 8. 2021 | published 18. 8. 2021

Summary

A replacement part for the German Tefi KC-1 Ra "Schallbandgerät"



0.91 hrs



2 pcs



0.10 mm
0.30 mm



0.40 mm



PLA
PET



7 g



Prusa
MK3/S/S+

[Gadgets](#) > [Audio](#)

Tags: **tefifon**

The drive pulley cap is a part of the Tefifon that is sometimes cracked. Although I didn't need one, I wanted to prove that a replacement part could be made using 3D printing techniques. So I designed this replacement part.

Original:



Changelog:

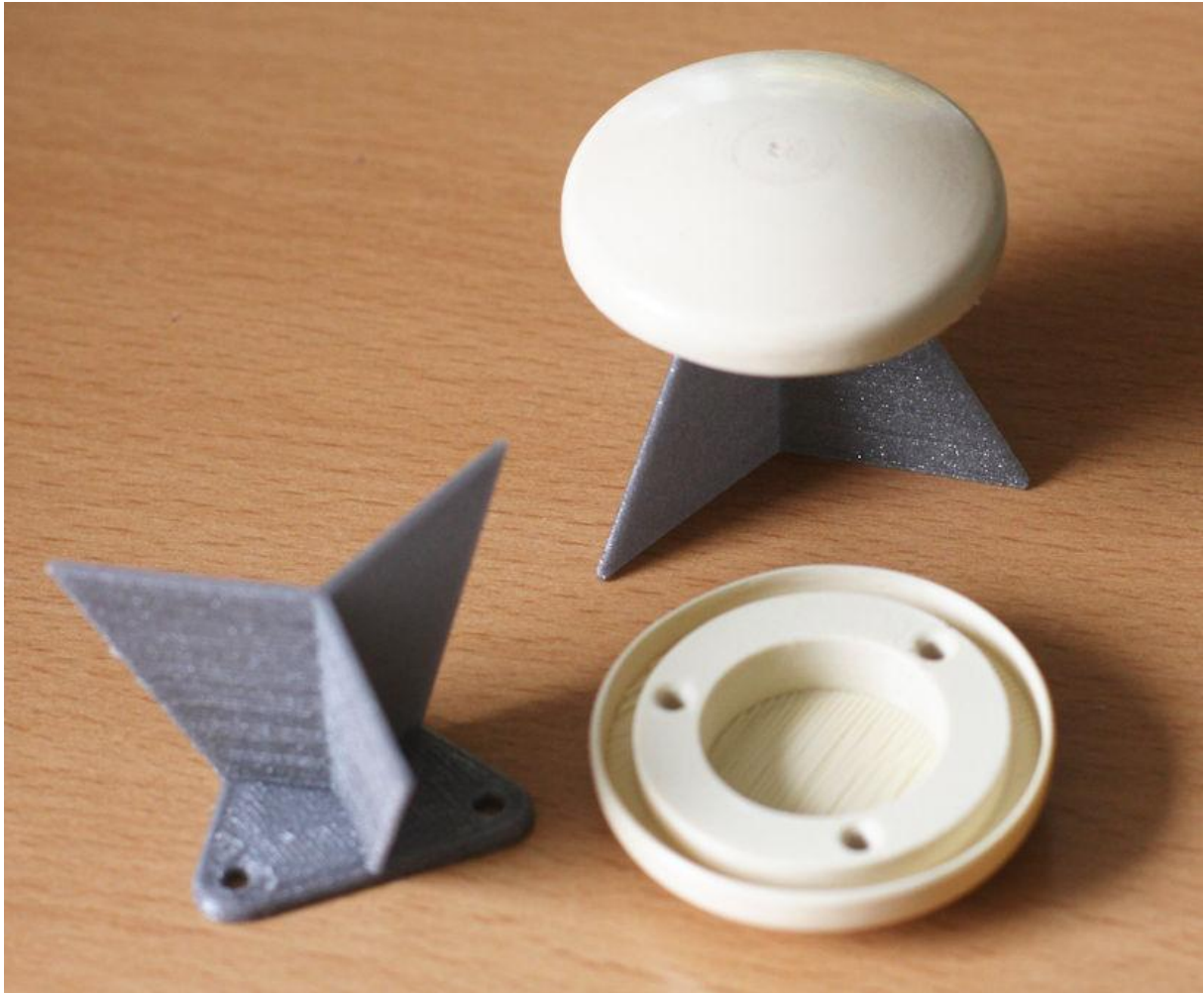
- August 30, 2021:
 - Added a support for sanding and varnishing to the design. The cap now has three holes to temporarily mount the support.

Printing

The part is printed in light ivory PLA to match the color of the original part as good as possible. It prints without support. The 3mf and gcode files are provided for download as well as the stl file. I opted for printing in variable layer height from 0.05mm up to 0.25mm.

Postprocessing

To mimic the material of the original as closely as possible, the printed part must be carefully sanded with emery paper and then coated with a thin layer of glossy paint. The download files also contain a simple support for sanding and varnishing - just use M3 x 5...6mm screws to attach it to the cap:



I am using glossy polyurethane varnish. Don't forget to sand the part after the first coat has dried. I applied multiple thin coats to get a perfect result. I am very happy with how it turns out.

Design and Source Code

The part has been designed using OpenSCAD. I have provided the source code for download.

Happy printing!

If you like this design, then **please leave a like** and also **post a photo in the comments**.

Looking for more Tefifon related stuff? Have a look at my [Tefifon collection](#).

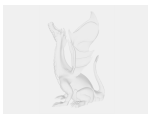
You might also want to check out my [other designs](#).

Model files

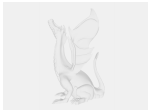


Source Code

2 files



tefifon-drive-pulley-cap.scad



lib_markus.scad



tefifon-drive-pulley-cap.3mf



tefifon-drive-pulley-cap.stl



varnishing-support.3mf



varnishing-support.stl

Print files



tefifon-drive-pulley-cap_variable_pla_mk3s_55m.gcode

⚙️ PLA ⚙️ 0.40 mm ⚙️ 0.10 mm ⌚ 0.91 hrs ⚖️ 7 g 🖨️ Prusa MK3/S/S+



varnishing-support_03mm_petg_mk3s_16m.gcode

⚙️ PET ⚙️ 0.40 mm ⚙️ 0.30 mm ⌚ 0.27 hrs ⚖️ 3 g 🖨️ Prusa MK3/S/S+

License ©

This work is licensed under a
[Creative Commons \(4.0 International License\)](#)



Attribution—Noncommercial—Share Alike

- ✗ | Sharing without ATTRIBUTION
- ✓ | Remix Culture allowed
- ✗ | Commercial Use
- ✗ | Free Cultural Works
- ✗ | Meets Open Definition