

## DJI Controller Bicycle Mount



Open Hardware Designs

[VIEW IN BROWSER](#)

updated 15. 9. 2022 | published 15. 9. 2022

### Summary

It's a mount for DJI controller to be mounted on a bicycle handlebar. Parametric design in FreeCAD.



5.94 hrs



1 pcs



0.20 mm



0.40 mm



PLA



59 g



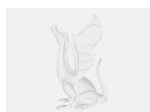
Prusa  
MK3/S/S+

[Sports & Outdoor](#) > [Outdoor Sports](#)

Tags: [bicycle](#) [bicyclemount](#) [dji](#) [djimavicair2](#)

Check out new version V3 on [PrusaPrinters](#) or [GitLab](#)

### Model files



m4\_bolt\_knob\_30mm.fcstd



**controller\_mount\_v2-handlebarbottom\_clip-meshed.stl**

---



**m4\_bolt\_knob\_12mm.fcstd**

---



**controller\_mount\_v2-handlebarbottom\_clip-meshed.3mf**

---



**controller\_mount\_v2-handlebartop\_clip-meshed.stl**

---



**m4\_bolt\_knob\_25mm.fcstd**

---



**controller\_mount\_v2.fcstd**

---



**controller\_mount\_v2-conroller\_mount-meshed.stl**

---



**controller\_mount\_v2-knob-meshed.stl**

---



**knob\_m4-grip\_knob-meshed.stl**

# Print files



## controller\_mount\_v2-handlebarbottom\_clip-meshed.gcode

🌀 PLA 📏 0.40 mm 📐 0.20 mm ⌚ 5.94 hrs ⚖️ 59 g 🖨️ Prusa MK3/S/S+

[Find source .stl files on Thingiverse.com](#)

## License ©

This work is licensed under a  
**GNU**



**General Public License v3.0**

- 
- ✗ | Sharing without ATTRIBUTION
  - ✓ | Remix Culture allowed
  - ✓ | Commercial Use
  - ✓ | Meets Open Definition
  - i | Share under the same license