



KitchenAid Stand Mixer - Attachment Adapters

 **neocrisis**

[VIEW IN BROWSER](#)

updated 28. 1. 2024 | published 28. 1. 2024

Summary

I have made two adapters that allow your stand mixer (KitchenAid only) to use the following attachments 1 - Hex-shank...

[Hobby & Makers](#) > [Tools](#)

Tags: [thingiverse](#)

I have made two adapters that allow your stand mixer (KitchenAid only) to use the following attachments

1 - Hex-shank drill bits which have a hexagonal shank to them. This does not work with bits with a round shank to them.

- All you need to do is insert the drill bit into the adaptor and you are set to go. There is only a .01 inch tolerance of wiggle room, so i think it works well.

2 - Any grinder attachment that uses a 5/8 screw.

- All you need to do is push the hex side of the screw into the adapter that you printed. It is a TIGHT fit. It should work if you are able to get the screw most of the way into the print.

Print Settings

- I used 20% infill and 3 layer walls. Its not a big part but these settings made it feel strong.

If you want to use different screw size or want a different type of adapter, I think I can create it. Feel free to PM me

- Unresolved problem

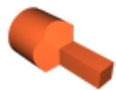
If you turn on the machine with these designs inserted, they will fly off, even at the lowest speed. If you put pressure on it and then turn on the machine, this won't happen.

I have not come up with a solution to problem. Maybe use a tiny magnet on the tip of the part that goes into the attachment point.

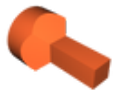
Honestly, no idea if I ever will. I tend to think of ideas totally out if the blue and I got no clue when that could happen, lol.

Category: Machine Tools

Model files



sander_adaptor_-_drill_bits_v6.stl



body1.stl

[Find source .stl files on Thingiverse.com](#)

License ©

This work is licensed under a
[Creative Commons \(4.0 International License\)](#)



Attribution

- ✗ | Sharing without ATTRIBUTION
- ✓ | Remix Culture allowed
- ✓ | Commercial Use
- ✓ | Free Cultural Works
- ✓ | Meets Open Definition