

Taipei 101 (Skyscraper)

n neocrisis

[VIEW IN BROWSER](#)

updated 28. 1. 2024 | published 28. 1. 2024

Summary

When I first saw this building, I was like "I can make it" The video shows a 25% scale model that is around 18 inches...

[World & Scans](#) > [Architecture & Urbanism](#)

Tags: [thingiverse](#)

When I first saw this building, I was like "I can make it"

The video shows a 25% scale model that is around 18 inches high.

- I would love to make a full scale model but dont have the funds to use all my filament on 1 print

The full scale model at 100% would stand around 6ft tall with a 5.4in by 5.4 inch base.

I designed it so it can all be connected by a 5/16 wood dowel I got from Walmart. I used expanding gorilla glue to glue everything together.

---Parts list / Connection Order ---

Top of list = Higher on tower

Bottom of list = Lower on tower

Antenna - Dish (Print 1)

Antenna - Bottom (Print 1)

Top - Top (Print 1)

Top - Center (Print 1)

Top - Bottom (Print 1)

Floor 2 to 8 - Print 7 of these (slightly different from floor 1)

Floor 1 (Print 1)

Base / Floor Connector (Print 1) + Circle Key (Print 4 of these, will be added to Base / Floor)

Base - Top (Print 1)

Base - Center (Print 1)

Base - Bottom (Print 1)

I am the owner of <http://www.neocrisis.com/>

Category: Buildings & Structures

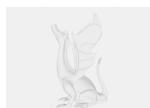
Model files



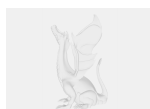
large_display_circle_key_-_print_4_of_these_742027.stl



large_display_top_-_center_742027.stl



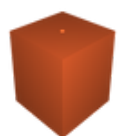
large_display_antenna_-_bottom_742027.stl



large_display_top_-_bottom_742027.stl



floor_1_-_print_1_of_these.stl



base_-_top.stl



base_floor_connector.stl



top_-_center.stl



top_-_bottom.stl



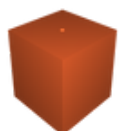
floor_2_to_8_-_print_7_of_these.stl



circle_key_-_print_4_of_these.stl



antenia_-_dish.stl



base_-_center.stl



antenia_-_bottom.stl



base_-_bottom.stl



top_-_top.stl

[Find source .stl files on Thingiverse.com](#)

License ©

This work is licensed under a
Creative Commons (4.0 International License)



Attribution

-
- ✗ | Sharing without ATTRIBUTION
 - ✓ | Remix Culture allowed
 - ✓ | Commercial Use
 - ✓ | Free Cultural Works
 - ✓ | Meets Open Definition