



Custom Parts For @Chad_35259 Car Stand



mouseFPV

VIEW IN BROWSER

updated 28. 1. 2024 | published 28. 1. 2024

Summary

I created some custom (and quite specific) parts for my modified stand. May not be useful but here are my files.

[Hobby & Makers](#) > [RC & Robotics](#)

Power Supply I used (I have the older version): <https://www.racedayquads.com/products/rdq-power-supply-400w-16-7a-24v-plug-and-play-for-isdt-chargers-and-others?keyword=power%20supply>
buck converter for 24 → 12v for the lights: https://www.amazon.com/gp/product/B00LSEBYHU/ref=ppx_yo_dt_b_search_asin_title?ie=UTF8&psc=1
buck converter for the 12v - 5v for the tablet: https://www.amazon.com/dp/B08H89LTP5?ref=ppx_yo2ov_dt_b_product_details&th=1
waygos: <https://www.homedepot.com/p/WAGO-221-415-996-010-5-Wire-Lever-Nuts-Conductor-Compact-Splicing-Connectors-12-24-AWG-10-Pack-60343607/318073858>

tablet I used: **Samsung Galaxy Tab A 8" SM-T378V**

(the tablet stinks... pulled it from a junk drawer...)

Bottom Wire Management - This attaches to the front of the extrusion and gives a channel on the left of the stand to run large AWG through. I used this to run 12AWG from the PSU to my xt60 (that feeds a charger).

Buck Extrusion mount - Attaches the variable buck to the extrusion. sink M3x6x5 heatset inserts into the holes in the corners. This also holds the top of the psu to the frame.

Handle - this stinks and is super small and weak. Trust it at your own peril.
I need to beef it up but im lazy

Male xt60 - This allows you to mount a male xt60 to the frame. i run this off my psu and then plug my charger into it with a female → female xt60 cable (remember, “male” means the pins are male, not the plastic housing... this is the “female” plastic housing, male pins)

base psu mount - holds bottom of psu to frame

tab case back - this is the back of the case for the tab. its intentionally about 2mm too thick. Use foam tape from the original post to get a good fit. this was easier that getting exact measurements (im lazy, remember?)

tab case front - guess what this is for...

top wire management - this is wire management, same as the bottom one, but for the top. has a cutout so you can run wires to the waygos.

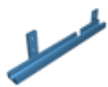
This remix is based on



1/10 Scale RC Car Stand

by Chad

Model files



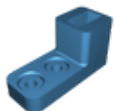
part-studio-1-bottom-wire-management.3mf



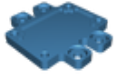
part-studio-1-top-wire-management.3mf



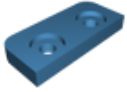
part-studio-1-handle.3mf



part-studio-1-male-xt60.3mf



part-studio-1-buck-extrusion-mount.3mf



part-studio-1-psu-base-mount.3mf



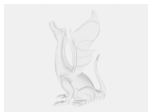
part-studio-1-tab-case-front.3mf



part-studio-1-tab-case-black.3mf



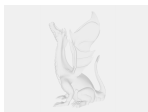
part-studio-1-bottom-wire-management.step



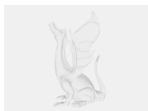
part-studio-1-buck-extrusion-mount.step



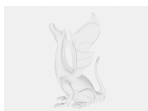
part-studio-1-top-wire-management.step



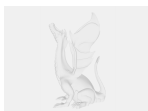
part-studio-1-tab-case-black.step



part-studio-1-psu-base-mount.step



part-studio-1-handle.step



part-studio-1-male-xt60.step



part-studio-1-tab-case-front.step

License ©

This work is licensed under a
Creative Commons (4.0 International License)



Attribution-NonCommercial

- ✗ | Sharing without ATTRIBUTION
- ✓ | Remix Culture allowed
- ✗ | Commercial Use
- ✗ | Free Cultural Works
- ✗ | Meets Open Definition