



Bosch MUM4 Table - voronoi feet



Bombastus Hands

[VIEW IN BROWSER](#)

updated 28. 1. 2024 | published 28. 1. 2024

Summary

In case you want to use ordinary bowls with your Bosch food processor.



3.64 hrs



1 pcs



0.20 mm



0.40 mm



PLA



49 g



Prusa MK4

[Household](#) > [Kitchen](#)

Tags: [bosch](#) [mum](#) [foodprocessor](#) [mum4](#) [muz4ds4](#)

It's nothing special but I wanted to do it for a while now. So now it's designed to compete in the current **voronoi contest**.

It's a little table in case you're using a Bosch food processor and the slicer to shred vegetables. Of course you can use the original bowl, but ordinary bowls are way easier to clean. Usual bowls don't stand on the machines foot, so you need this little add-on.

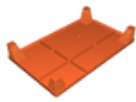
The table has **voronoi feet** and a continuous top. I like this combined with the color mixed style.

I printed the frame separately because it was done later.

You can print by changing filament on certain layer heights - like I did - or if you have any kind of MMU/AMS just change part colors in your slicer software.

I'm excited to see if anyone else needs this little helper. 😊

Model files

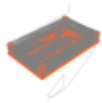


bosch-riser.3mf



bosch-riser.stl

Print files



bosch-table_04n_02mm_pla_mk4_3h38m.bgcode

⚙️ PLA ⚙️ 0.40 mm ⚙️ 0.20 mm ⌚ 3.64 hrs ⚖️ 49 g 🖨️ Prusa MK4

📄 Changing PLA twice: 1) frame and voronoi, 2) feet

License ©

This work is licensed under a
[Creative Commons \(4.0 International License\)](#)



Attribution—Noncommercial—Share Alike

-
- ✗ | Sharing without ATTRIBUTION
 - ✓ | Remix Culture allowed
 - ✗ | Commercial Use
 - ✗ | Free Cultural Works
 - ✗ | Meets Open Definition