



## Peter Griffffin Medallion Optimized for Detail



Beeg Beeg Yoshi

[VIEW IN BROWSER](#)

updated 13. 2. 2024 | published 13. 2. 2024

## Summary

Split the medallion so you can print peters with higher resolution

[Costumes & Accessories](#) > [Props](#)

Tags: [peter](#) [medallion](#) [griffin](#)

I was very happy with the original model, but I don't like sanding my parts so I found a way to split the face from the rest of the coin to print the face in higher quality.

Can print the medallion shell normally, but for printing Peter's face I added snug supports and a brim so that it wouldn't come off of the build plate during printing. It has a very small contact area so this is probably required. Gluestick and printing slow can help too if there are adhesion issues. The face should be printed vertically, like how it is oriented in the 3mfs I uploaded, as model's generally have finer detail on the z-axis. This achieves a much smoother result that requires less post-processing, if any.

I included 3mf files for both Prusaslicer and Bambuslicer, so download the 3mf for your respective slicer. These are the only 2 slicers I tested, so I am not sure if others will work. I used negative parts to separate the parts, which you will be able to see when importing the 3mf.

You will need a very small dot of superglue or other adhesive to attach the face back to the medallion.

Thanks to the original creator for uploading this!

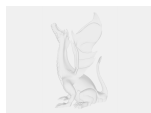
## This remix is based on



**Peter Griffin Medallion**

by JohnDFishing

## Model files



**peter\_medallion\_bambu.3mf**



**peter\_medallion\_prusaslicer.3mf**

## License

This work is licensed under a  
**Creative Commons (4.0 International License)**



**Attribution-ShareAlike**

- ✗ | Sharing without ATTRIBUTION
- ✓ | Remix Culture allowed
- ✓ | Commercial Use
- ✓ | Free Cultural Works
- ✓ | Meets Open Definition

