

Chest - Coin Gift Box in Four Sizes



LuckyResistor

[VIEW IN BROWSER](#)

updated 19. 8. 2021 | published 19. 8. 2021

Summary

This gift box is specially designed to wrap gold/silver coins. There are four sizes for 18, 20, 22 and 32mm coins.



5.36 hrs



4 pcs



0.10 mm



0.40 mm



PLA



29 g



Prusa MINI /
MINI+

[Art & Design](#) > [Other Art & Designs](#)

Tags: [parametric](#) [coin](#) [gold](#) [silver](#) [design](#) [modular](#) [gift](#)
[chest](#) [inset](#) [giftbox](#) [sizes](#)

This gift box, in the shape of a chest, was specially designed for commonly sized coins. There are premade models for the coin sizes 18, 20, 22 and 32mm, which match most commonly sold gold and silver coins.

It is a two-part print: The first part is the outer shell of the chest, and the second one is the inset and platform for the coin and an attachment for the lid.

The inset also makes this print modular. If you give a single coin, it is a nice way to present this coin on this elevated platform. But you can also omit the platform and fill the whole chest with coins or other objects.

I recommend using Prusament PLA for the print:

- Outer shell: Prusament PLA Mystic Brown
- Insets: Prusament PLA Galaxy Black

There is also the fully parametric Fusion 360 design you can download. There is a single parameter “coin_diameter” which defines the complete box. This parameter works well, in a wide range for coin diameters between 10mm and 60mm. For smaller or larger coins, you have to adjust other parameters in the design.

The gcode files are prepared for the Prusa MINI and MK3S printers. They expect PLA material and will print the chest in 0.1mm layers which will provide a really nice look - even on the top of the round lid.

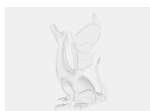
If you find this print useful, please take some photos of your print and add them to this page! 😊

Model files



Parametric Design

1 file



lr2164-18-chest.f3d



Print Configurations

2 files



lr2164-18-print-shell.3mf

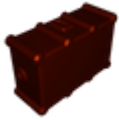


lr2164-18-print-inset.3mf



Model 18mm

4 files



lr2164-18-101.3mf



lr2164-18-102.3mf



lr2164-18-103.3mf

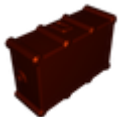


lr2164-18-104.3mf



Model 20mm

4 files



lr2164-20-101.3mf



lr2164-20-102.3mf



lr2164-20-103.3mf

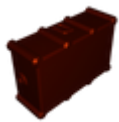


lr2164-20-104.3mf



Model 22mm

4 files



lr2164-22-101.3mf



lr2164-22-102.3mf



lr2164-22-103.3mf

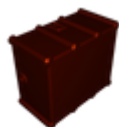


lr2164-22-104.3mf



Model 33mm

4 files



lr2164-33-101.3mf



lr2164-33-102.3mf



lr2164-33-103.3mf



lr2164-33-104.3mf

Print files



Mini

2 files



lr2164-18-print-shell_01mm_pla_mini_3h51m.gcode

PLA 0.40 mm 0.10 mm 3.85 hrs 19 g Prusa MINI / MINI+



lr2164-18-print-inset_01mm_pla_mini_1h31m.gcode

PLA 0.40 mm 0.10 mm 1.51 hrs 10 g Prusa MINI / MINI+



MK3S

2 files



lr2164-18-print-shell_01mm_pla_mk3s_4h2m.gcode

PLA 0.40 mm 0.10 mm 4.04 hrs 19 g Prusa MK3/S/S+



Ir2164-18-print-inset_01mm_pla_mk3s_1h32m.gcode

PLA 0.40 mm 0.10 mm 1.53 hrs 10 g Prusa MK3/S/S+

License



This work is licensed under a
[Creative Commons \(4.0 International License\)](#)

Attribution-ShareAlike

-
- ✗ | Sharing without ATTRIBUTION
 - ✓ | Remix Culture allowed
 - ✓ | Commercial Use
 - ✓ | Free Cultural Works
 - ✓ | Meets Open Definition